

---

National Mining Association

# Weekly Statistical Summary

January 23, 2009 Edition  
(Data for Week Ending January 17, 2009)

Prepared by  
National Mining Association



Suite 500 East, 101 Constitution Avenue, NW  
Washington, DC, 20001  
Phone (202) 463-2600  
Visit us at <http://www.nma.org>

# NMA Weekly Statistical Summary

Vol. 47, No. 3  
Dated 01/23/09

PRODUCTION, CONSUMPTION & TRADE						
	Week Ended			* Cumulative Jan 1 to		
	01/17/09	01/19/08	% Chng	01/17/09	01/17/08	% Chng
<b>EIA Coal Production (000 Tons):</b>						
Week Ended/Year to Date	22,562	22,332	1.0%	53,646	54,534	-1.6%
52 Weeks Ended	1,163,813	1,142,773	1.8%			
* Due to leap year, 2008 cumulative reflects one extra day of tonnage.						
	December 08/07		% Chng	Jan - Dec 08/07		% Chng
<b>Month Ended -- December</b>	99,271	93,138	6.6%	1,170,188	1,146,635	2.1%
MONTH ENDED AND CUMULATIVE NUMBERS ARE PRELIMINARY AND SUBJECT TO CHANGE						
DOC Bituminous Coal Trade (000 Tons)						
	Nov 08/07		% Chng	Jan - Nov 08/07		% Chng
<b>Exports:</b>						
Metallurgical	3,636	3,096	17.4%	40,363	29,528	36.7%
Steam	3,785	3,119	21.4%	34,152	23,273	46.7%
<b>Imports:</b>	2,988	2,889	3.4%	31,015	33,535	-7.5%
	Week Ended			* Cumulative Jan 1 to		
	01/17/09	01/19/08	% Chng	01/17/09	01/19/08	% Chng
<b>EEl Electric Output (Mil. Kwh)</b>	83,772	81,351	3.0%	233,719	236,639	-1.2%
<b>AISI Raw Steel Output (000 Tons)</b>	1,045	2,154	-51.5%	2,479	5,229	-52.6%
Data not available for AISI Raw Steel						
EIA U.S. PETROLEUM DATA						
4-Week Averages						
000 Barrels per Day						
	Week Ending			Cumulative Daily Averages		
	01/16/09	01/16/08	% Chng	2008	2007	% Chng
<b>PETROLEUM SUPPLY:</b>						
Domestic Crude	4,971	5,076	-2.1			
Net Imports (Incl. SPR)	9,804	9,908	-1.0			
SPR Stocks W/D or Added	-9	-46	--			
Other Stocks W/D or added	-517	23	--			
Natural Gas Liquids Prod.	2,197	2,281	-3.7			
Cumulative daily petroleum averages will be shown beginning with week ending April 3, 2009 data.						



**NMA**

THE AMERICAN RESOURCE National Mining Association Web Site: [http:// www.nma.org](http://www.nma.org)

## EIA Estimated Weekly U.S. Coal Production Overview (Thousand Short Tons)

Coal-Producing Region and State	Week Ended			Year to Date			Percent Change	52 Weeks Ended		Percent Change
	1/17/2009	1/10/2009	1/19/2008	1/17/2009	1/17/2008	1/17/2009		1/19/2008		
Alabama	414	421	437	978	1,065	-8.2	20,605	19,514	5.6	
Alaska	25	26	30	57	70	-19.0	1,351	1,298	4.1	
Arizona	168	171	146	388	376	3.3	8,014	7,931	1.1	
Arkansas	1	1	1	3	3	-6.1	58	82	-28.6	
Colorado	676	688	637	1,619	1,506	7.5	33,674	36,317	-7.3	
Illinois	593	604	602	1,382	1,431	-3.4	31,783	32,261	-1.5	
Indiana	707	719	675	1,677	1,645	1.9	35,954	34,855	3.2	
Kansas	5	5	6	13	15	-14.8	283	412	-31.3	
<b>Kentucky Total</b>	<b>2,159</b>	<b>2,197</b>	<b>2,317</b>	<b>5,042</b>	<b>5,644</b>	<b>-10.7</b>	<b>117,888</b>	<b>114,999</b>	<b>2.5</b>	
Eastern	1,617	1,646	1,748	3,764	4,281	-12.1	88,667	86,910	2.0	
Western	541	551	568	1,278	1,363	-6.2	29,221	28,089	4.0	
Louisiana	106	79	80	224	214	4.5	3,942	3,142	25.5	
Maryland	48	49	40	113	98	15.0	2,572	2,274	13.1	
Mississippi	40	59	70	124	177	-30.0	2,679	3,569	-24.9	
Missouri	6	6	4	14	10	36.3	255	234	9.2	
Montana	856	871	873	2,066	2,072	-0.3	44,034	43,514	1.2	
New Mexico	574	584	356	1,368	878	55.9	27,994	24,177	15.8	
North Dakota	556	566	543	1,326	1,351	-1.8	29,502	29,328	0.6	
Ohio	471	479	470	1,122	1,143	-1.9	25,381	22,574	12.4	
Oklahoma	33	33	30	77	75	3.0	1,470	1,636	-10.1	
<b>Pennsylvania Total</b>	<b>1,254</b>	<b>1,277</b>	<b>1,328</b>	<b>2,940</b>	<b>3,221</b>	<b>-8.7</b>	<b>63,958</b>	<b>64,774</b>	<b>-1.3</b>	
Anthracite	22	22	30	50	72	-29.7	1,498	1,556	-3.7	
Bituminous	1,233	1,255	1,298	2,890	3,149	-8.2	62,460	63,219	-1.2	
Tennessee	48	49	49	110	120	-8.4	2,431	2,624	-7.4	
Texas	774	787	719	1,864	1,701	9.6	38,436	41,703	-7.8	
Utah	450	458	508	1,043	1,229	-15.1	23,525	24,286	-3.1	
Virginia	484	493	438	1,146	1,056	8.5	24,813	24,998	-0.7	
<b>West Virginia Total</b>	<b>3,013</b>	<b>3,067</b>	<b>3,060</b>	<b>7,108</b>	<b>7,416</b>	<b>-4.2</b>	<b>158,397</b>	<b>152,717</b>	<b>3.7</b>	
Northern	812	826	798	1,868	1,890	-1.2	40,539	41,674	-2.7	
Southern	2,201	2,241	2,262	5,240	5,526	-5.2	117,858	111,042	6.1	
Wyoming	9,102	9,135	8,914	21,845	22,019	-0.8	464,813	453,554	2.5	
<b>Appalachian Total</b>	<b>7,350</b>	<b>7,482</b>	<b>7,571</b>	<b>17,280</b>	<b>18,401</b>	<b>-6.1</b>	<b>386,824</b>	<b>376,386</b>	<b>2.8</b>	
<b>Interior Total</b>	<b>2,805</b>	<b>2,845</b>	<b>2,755</b>	<b>6,654</b>	<b>6,633</b>	<b>0.3</b>	<b>144,082</b>	<b>145,983</b>	<b>-1.3</b>	
<b>Western Total</b>	<b>12,406</b>	<b>12,498</b>	<b>12,006</b>	<b>29,712</b>	<b>29,499</b>	<b>0.7</b>	<b>632,908</b>	<b>620,404</b>	<b>2.0</b>	
<b>East of Miss. River</b>	<b>9,232</b>	<b>9,415</b>	<b>9,486</b>	<b>21,741</b>	<b>23,017</b>	<b>-5.5</b>	<b>486,460</b>	<b>475,161</b>	<b>2.4</b>	
<b>West of Miss. River</b>	<b>13,330</b>	<b>13,410</b>	<b>12,846</b>	<b>31,906</b>	<b>31,517</b>	<b>1.2</b>	<b>677,353</b>	<b>667,612</b>	<b>1.5</b>	
Bituminous and Lignite	22,540	22,803	22,302	53,596	54,462	-1.6	1,162,316	1,141,217	1.8	
Anthracite	22	22	30	50	72	-29.7	1,498	1,556	-3.7	
<b>U.S. Total</b>	<b>22,562</b>	<b>22,825</b>	<b>22,332</b>	<b>53,646</b>	<b>54,534</b>	<b>-1.6</b>	<b>1,163,813</b>	<b>1,142,773</b>	<b>1.8</b>	
Railroad Cars Loaded	141,927	146,003	145,761	426,528	427,045	-0.1	7,652,052	7,416,760	3.2	

Source: Energy Information Administration



Volume 77 No. 3

**OUTPUT FOR WEEK ENDED - Jan 17, 2009**

Jan 22, 2009

The net available amount of electric energy distributed by the Total Electric Utility Industry+ for the week ended Saturday, Jan 17, 2009 was 83,772 gigawatthours (GWh), according to the Edison Electric Institute. This is equivalent to 191 on the weekly electric output index.

**WEEKLY ELECTRIC OUTPUT BY GEOGRAPHIC DIVISION**  
(48 CONTIGUOUS STATES)

	Week Ended January 17		52 Weeks Ended January 17	
	GWh Output	% Increase Over Corresponding Week of 2008	GWh Output	% Increase Over Corresponding Period of 2008
New England	2,808	6.9	130,981	-2.7
Mid-Atlantic	9,698	10.9	452,436	-1.6
Central Industrial	15,271	3.3	708,162	-2.1
West Central	7,225	2.1	345,277	-2.1
Southeast	23,602	5.2	1,088,604	-2.0
South Central	11,364	-1.2	599,393	0.3
Rocky Mountain	4,849	-7.4	276,019	-0.7
Pacific Northwest	3,716	-6.3	167,217	4.8
Pacific Southwest	5,239	5.3	291,708	0.5
Total United States	83,772	3.0	4,059,797	-1.1

**WEEKLY ELECTRIC OUTPUT IN PREVIOUS WEEKS--GWh**

Week Ended	2009	Week Ended	2008	% Inc. (09/08)	52 Weeks Ended	2009	% Inc. (09/08)
Dec 27	77,710	Dec 29	74,832	3.8	Dec 27	4,062,716	-0.9
Jan 03	72,665	Jan 05	79,986	-9.2	Jan 03	4,055,395	-1.3
Jan 10	77,282	Jan 12	75,302	2.6	Jan 10	4,057,375	-1.2
Jan 17	83,772	Jan 19	81,351	3.0	Jan 17	4,059,797	-1.1
Jan 17	233,719	Jan 19	236,639	-1.2	YEAR TO DATE, FIRST 3 WEEKS		

**WEEKLY ELECTRIC OUTPUT INDEX--TOTAL U.S.\***  
**SEASONALLY ADJUSTED 1982 = 100**

Week Ended	2009	Week Ended	2008	Week Ended	2007
Dec 27	184	Dec 29	175	Dec 30	169
Jan 03	176	Jan 05	192	Jan 06	171
Jan 10	181	Jan 12	174	Jan 13	172
Jan 17	191	Jan 19	183	Jan 20	179

\* Excludes Alaska and Hawaii.

+ Includes investor-owned companies, cooperatives and government-owned utilities.

Copyright © 2009 Edison Electric Institute. All rights reserved.

**WEEKLY ELECTRIC OUTPUT BY GEOGRAPHIC DIVISION  
(48 CONTIGUOUS STATES)**

	Week Ended			NMA CUMULATIVE JANUARY WEEK ONE TO			52 Weeks Ended		
	17-Jan 2009 GWh Output	19-Jan 2008 GWh Output	% Increase Over Corresponding Week of 2008	17-Jan 2009 GWh Output	19-Jan 2008 GWh Output	% Increase Over Corresponding Week of 2008	17-Jan 2009 GWh Output	19-Jan 2008 GWh Output	% Increase Over Corresponding Week of 2008
<b>New England</b>	2,808	2,628	6.8%	<b>7,986</b>	<b>7,797</b>	<b>2.4%</b>	130,981	134,574	-2.7%
<b>Mid-Atlantic</b>	9,698	8,742	10.9%	<b>27,167</b>	<b>25,769</b>	<b>5.4%</b>	452,436	459,614	-1.6%
<b>Central Industrial</b>	15,271	14,783	3.3%	<b>41,988</b>	<b>42,366</b>	<b>-0.9%</b>	708,162	723,224	-2.1%
<b>West Central</b>	7,225	7,076	2.1%	<b>20,218</b>	<b>20,379</b>	<b>-0.8%</b>	345,277	352,852	-2.1%
<b>Southeast</b>	23,602	22,433	5.2%	<b>62,449</b>	<b>64,099</b>	<b>-2.6%</b>	1,088,604	1,110,780	-2.0%
<b>South Central</b>	11,364	11,507	-1.2%	<b>31,600</b>	<b>33,290</b>	<b>-5.1%</b>	599,393	597,315	0.3%
<b>Rocky Mountain</b>	4,849	5,237	-7.4%	<b>15,180</b>	<b>15,649</b>	<b>-3.0%</b>	276,019	278,096	-0.7%
<b>Pacific Northwest</b>	3,716	3,968	-6.4%	<b>11,555</b>	<b>12,014</b>	<b>-3.8%</b>	167,217	159,553	4.8%
<b>Pacific Southwest</b>	5,239	4,977	5.3%	<b>15,576</b>	<b>15,276</b>	<b>2.0%</b>	291,708	290,214	0.5%
<b>Total United States *</b>	83,772	81,351	3.0%	<b>233,719</b>	<b>236,639</b>	<b>-1.2%</b>	4,059,797	4,106,222	-1.1%

Notes: EEI output data are an estimate of electricity load made available for distribution derived as weekly net generation + purchases from non-utilities + net imports - exports - sales for resale. It is not meant to be a measure of electricity generation for the U.S. EEI survey data represent the majority of national distribution (large utilities, large government power projects, some independent and large municipal power projects). The remaining segment of the industry (smaller producers) is estimated. Non-utility generation is captured via direct sales to utilities.

\* Excludes Alaska and Hawaii

SOURCE: Edison Electric Institute (EEI), *Weekly Electric Output Report*.

AMERICAN IRON AND STEEL INSTITUTE  
 1140 Connecticut Avenue, Suite 705  
 Washington, D.C. 20036

January 23, 2009

**ESTIMATED WEEKLY RAW STEEL \* PRODUCTION**

Period	Thousand Net Tons	Percent Change from Previous Period	Percent Capability Utilization**	Production by District		
				Week Ending		
				Jan. 17	Jan. 10	
<b>Week Ending</b>				North East Coast	91	88
				Pgh/Youngstown	78	84
January 17, 2009	1,045	-1.6	43.8	Lake Erie	33	23
January 17, 2008	2,154	-51.5	90.3	Detroit	26	24
January 10, 2009	1,062	22.7	44.5	Indiana/Chicago	307	291
				Midwest	107	96
<b>Year-to-Date+</b>				Southern	362	412
				Western	41	44
January 17, 2009	2,479	-52.6	42.6	Total	1,045	1,062
January 17, 2008	5,229	-	90.3			

\*Raw steel production tonnage included in this report is estimated based on a sampling of steel producers. Therefore, this report should be used primarily to assess production trends. The AISI production report "AIS 7," produced monthly and available by subscription, provides a more accurate summary of steel production based on data supplied by companies representing approximately 75% of U.S. production capacity.

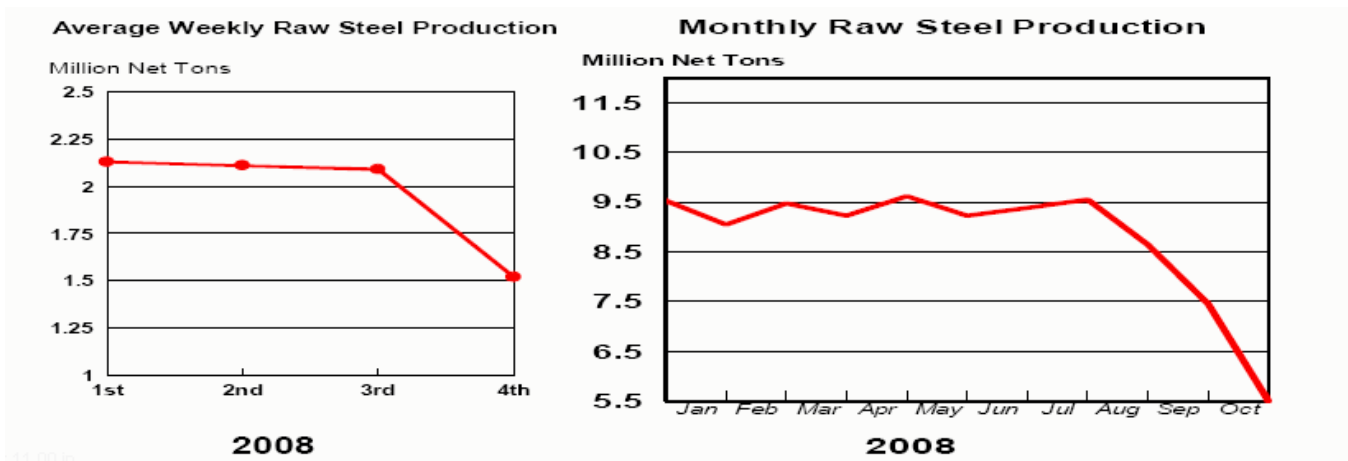
+ Includes revisions for previous months

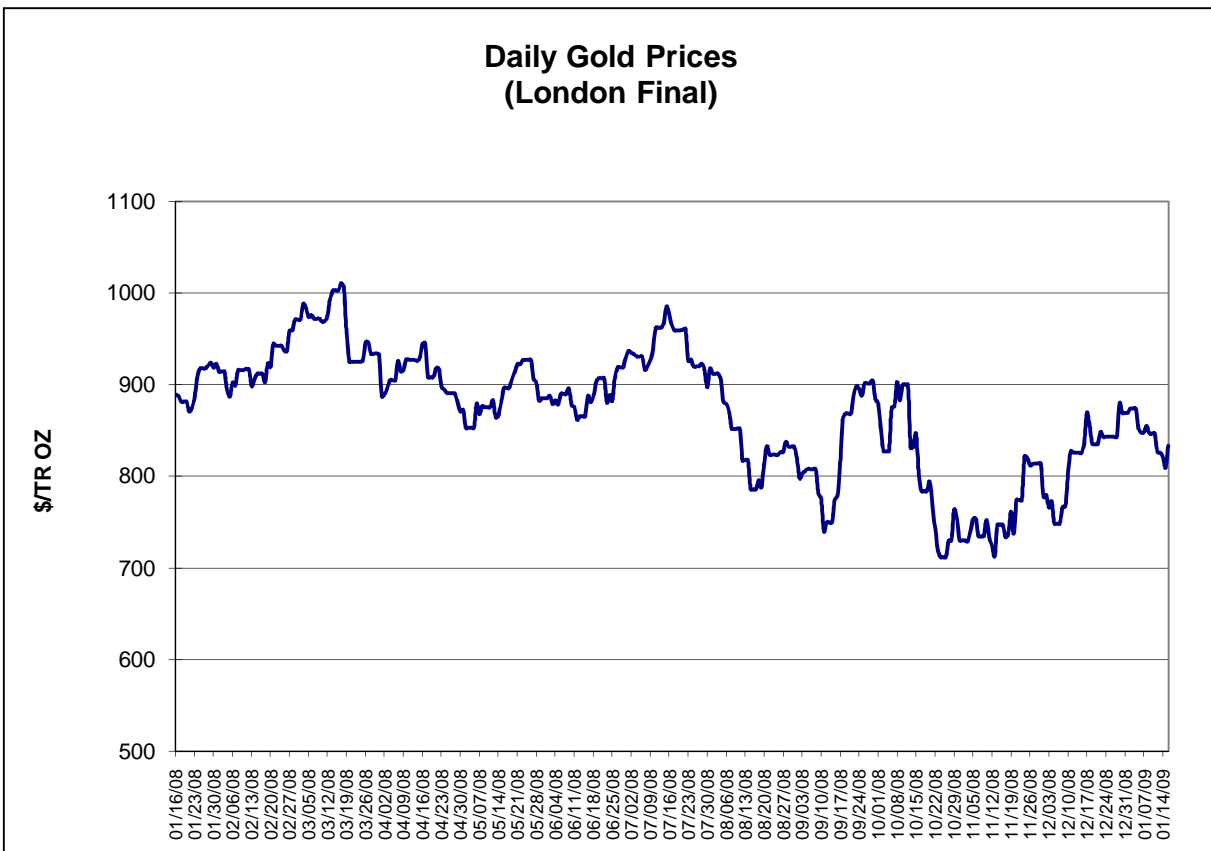
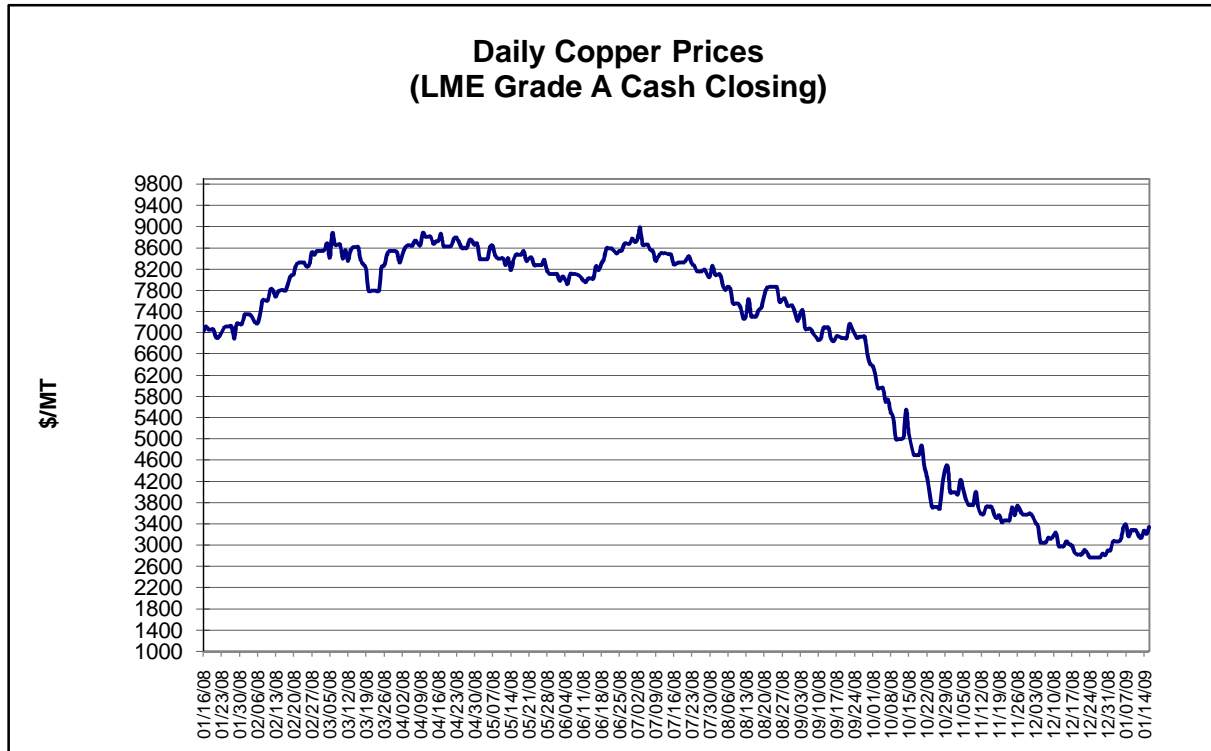
NOTE: Capability for the Third Quarter 2008 is approximately 31.4 million net tons vs 30.1 million net tons for the same period last year, and 31.0 million tons for the second quarter of 2008.

Capability -	2004 approx.	2.2 million tons/week
	2005	2.3
	2006	2.4
	2007	2.4
	2008	2.4

\*Steel in the first solid state after melting suitable for further processing or sale, including ingots, steel for castings and strand or pressure cast blooms, slabs, or other product forms.

\*\* Based on tonnage capability to produce raw steel for a sustained full order book.

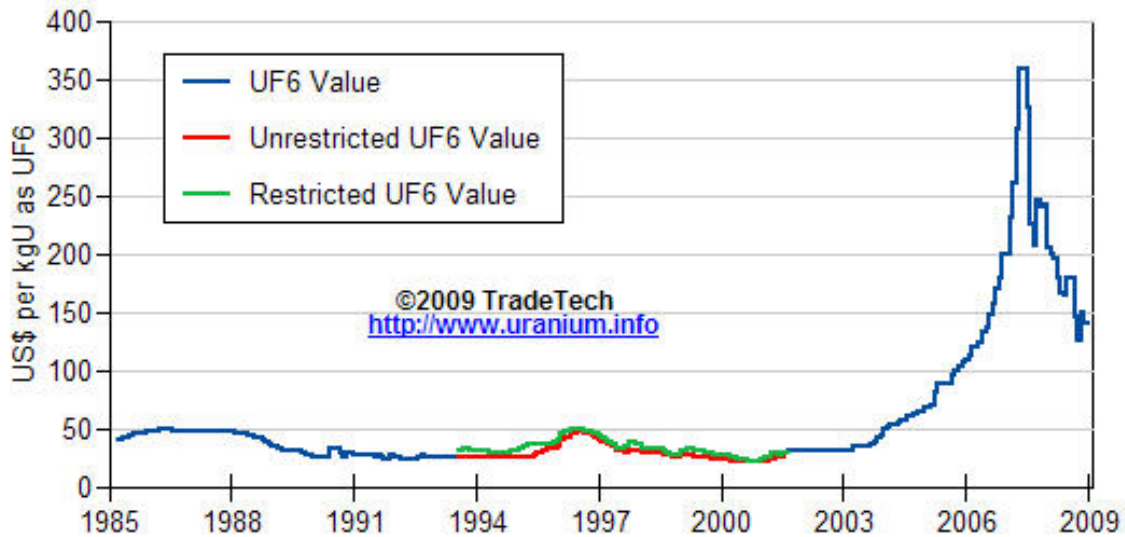




Data reflect closings on weekends and holidays.

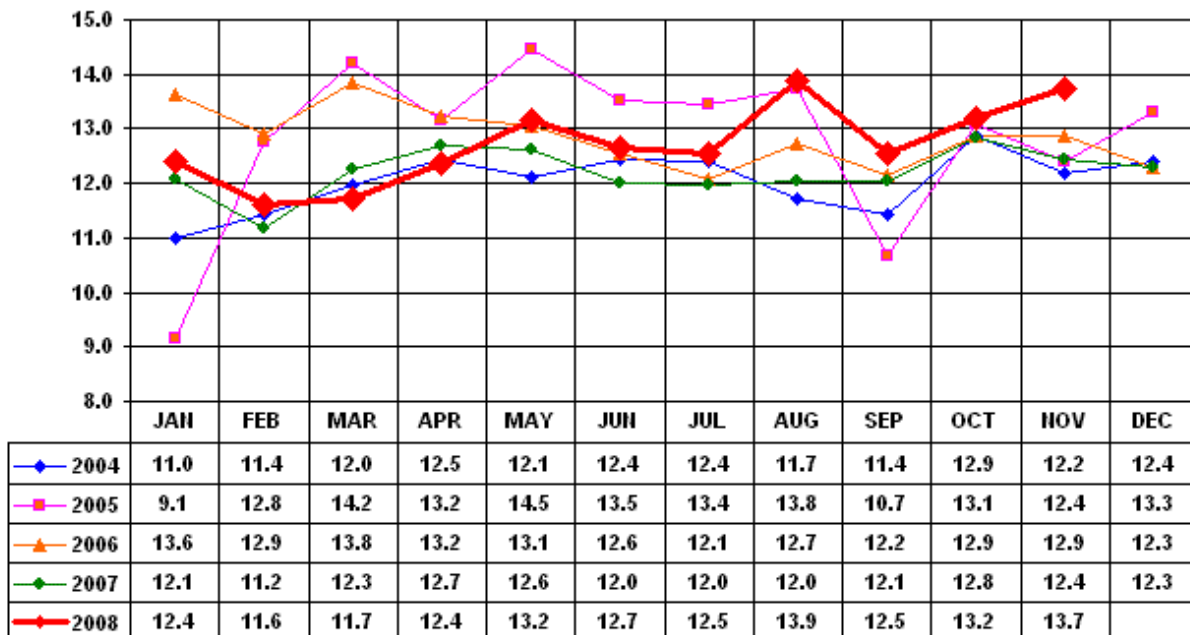
Source: Platts Metals Week

### Trade Tech's Uranium (UF6) Monthly Spot Prices (US\$/kg as UF6)



Source: Trade Tech, Uranium Info Website – <http://www.uranium.info>

### Coal and Coke Monthly Tonnage Indicator for Internal U.S. Waterways

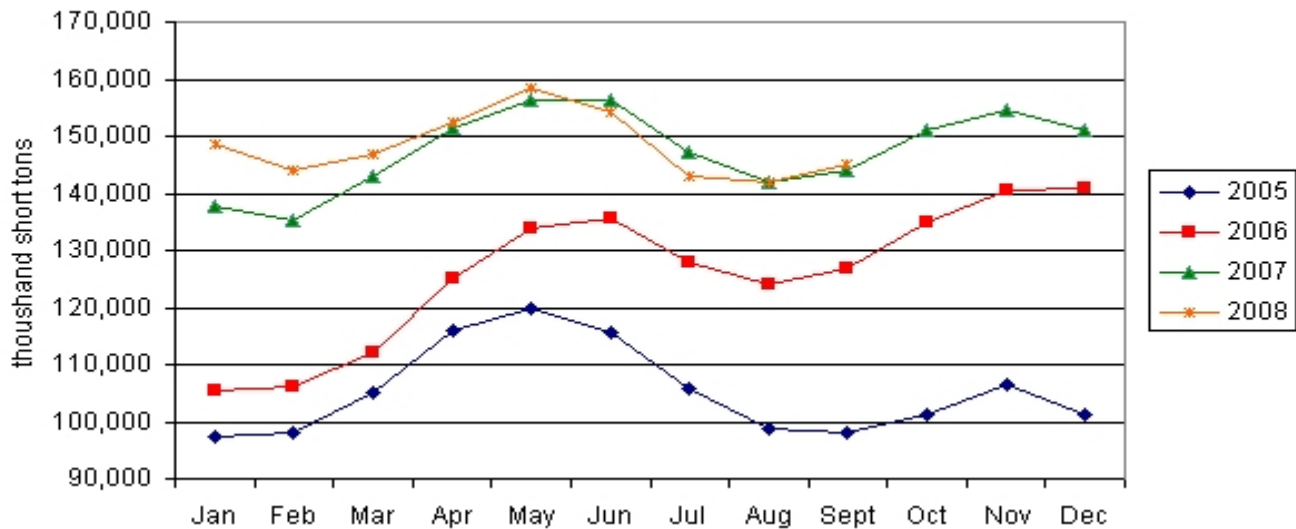


Source: U.S. Army Corps of Engineers, Waterborne Commerce Statistics Center

Average Weekly Coal Commodity Spot Prices (Dollars per Short Ton)					
Week Ended	Central Appalachia 12,500 Btu, 1.2 SO2	Northern Appalachia 13,000 Btu, <3.0 SO2	Illinois Basin 11,800 Btu, 5.0 SO2	Powder River Basin 8,800 Btu, 0.8 SO2	Uinta Basin 11,700 Btu, 0.8 SO2
11/21/08	\$111.15	\$111.50	\$84.00	\$14.50	\$73.00
11/28/08	\$111.15	\$101.50	\$83.00	\$14.50	\$73.00
12/05/08	\$89.80	\$101.50	\$78.00	\$12.50	\$73.00
12/12/08	\$81.55	\$101.50	\$78.00	\$12.50	\$73.00
12/19/08	\$81.55	\$101.50	\$78.00	\$13.00	\$73.00
1/2/09	\$80.85	\$88.75	\$78.00	\$13.00	\$73.00
1/9/09	\$76.80	\$76.00	\$78.00	\$13.00	\$73.00
1/16/09	\$66.45	\$76.00	\$60.00	\$13.00	\$73.00

Source: Energy Information Administration (from Platts *Coal Outlook*, "Weekly Price Survey")

### EIA Electric Power Sector Coal Stocks



Source: Energy Information Administration, *Coal News and Markets Report*

<b>USGS Production of Selected Mineral Commodities</b>	<b>2008 Year to Date - 3rd Quarter</b>	<b>2007 Year to Date - 3rd Quarter</b>	<b>Percent Change</b>
Aluminum, secondary (000 Mt.)	729.0	708.0	3%
Cement (Mil. Mt.)	65.6	70.0	-6%
Gypsum (Mil. Mt.)	14.1	16.4	-14%
Iron Ore (Mil. Mt.)	40.9	38.6	6%
Phosphate rock (Mil. Mt.)	23.0	22.1	4%
Sand & gravel, construction (Mil. Mt.)	754.0	940.0	-20%
Soda ash (Mil. Mt.)	8.4	8.3	1%
Stone, crushed (Mil. Mt.)	1,020.0	1,220.0	-16%
Zinc (000 Mt.)	628.0	574.0	9%

Source: U.S. Geological Survey, Mineral Industry Surveys, *U.S. Production of Selected Mineral Commodities in the Third Quarter 2008, November 2008*

<b>AAR U.S. Rail Traffic for Selected Commodities - Carloadings (000)</b>	<b>2008 Year to Date - Dec. 27</b>	<b>2007 Year to Date - Dec. 27</b>	<b>Percent Change</b>
Agricultural Products	2,161	2,151	0.5%
Chemicals	1,850	1,903	-2.8%
Coal	7,466	7,215	3.5%
Forest Products	657	743	-11.6%
Metallic Ores & Metals	1,169	1,291	-9.5%
Motor Vehicles & Equipment	814	1,034	-21.3%
Non-metallic Minerals & Products	1,693	1,853	-8.6%

Source: Association of American Rainroads, *Weekly Railroad Traffic*