
NATIONAL MINING ASSOCIATION

Weekly Statistical Summary

September 4, 2020 Edition
(Data for Week Ending August 29, 2020)

Prepared by
National Mining Association



101 Constitution Avenue, NW, Suite 500 East
Washington, DC, 20001
Phone (202) 463-2600
<http://www.nma.org>

NMA Weekly Statistical Summary

Vol. 58, No. 35
Dated 09/04/20

PRODUCTION, CONSUMPTION & TRADE

	Week Ended			* Cumulative Jan 1 to		
	08/29/20	08/31/19	% Chng	08/29/20	08/29/19	% Chng
EIA Coal Production (000 Tons):						
Week Ended/Year to Date	11,058	15,076	-26.7%	349,782	478,240	-26.9%
52 Weeks Ended	573,630	735,736	-22.0%			
AAR Coal Rail Cars Loaded:	62,919	86,661	-27.4%	1,962,792	2,697,615	-27.2%
Coal Production	July 20/19		% Chng	Jan - July 20/19		% Chng
Month Ended - July	43,087	50,027	-13.9%	305,274	418,584	-27.1%
DOC Coal Trade (000 Tons)						
Exports:	July 20/19		% Chng	Jan - July 20/19		% Chng
Metallurgical	3,724	3,656	1.9%	24,397	32,661	-25.3%
Steam Bit. *	1,581	2,761	-42.7%	15,551	24,144	-35.6%
Lignite	7	8	-12.5%	54	55	-1.8%
Anthracite	52	70	-25.7%	146	191	-23.6%
Total	5,364	6,495	-17.4%	40,148	57,051	-29.6%
Imports:	473	511	-7.4%	2,959	3,804	-22.2%
	Week Ended			Cumulative Week 1 to		
	08/29/20	08/31/19	% Chng	08/29/20	08/31/19	% Chng
EI Electric Total Output (Mil. Kwh)	90,683	82,497	9.9%	2,685,060	2,760,975	-2.7%
EI Coal Region Output (Mil. Kwh)	79,060	71,036	11.3%	2,324,128	2,393,273	-2.9%
AISI Raw Steel Output (000 Tons)	1,383	1,841	-24.9%	51,841	64,917	-20.1%

EIA (S&P Global) AVERAGE COAL & NATURAL GAS SPOT PRICES Dollars Per Short Ton

Average Coal Spot Prices (\$/Short Ton)	Week Ending			Natural Gas Spot Prices (\$/MMBtu)	
	08/28/20	08/21/20	% Chng	Wed.	08/26/20
Central App, 12,500 Btu, 1.2 SO ₂	\$55.50	\$55.50	0.0%	Henry Hub	2.51
Northern App, 13,000 Btu, < 3.0 SO ₂	42.45	42.45	0.0%	New York	1.98
Illinois Basin, 11,800, 5.0 SO ₂	34.05	34.05	0.0%	Chicago	2.33
Powder River Basin, 8,800 Btu 0.8 SO ₂	11.60	11.60	0.0%	Cal.Comp.Avg.	3.26
Uinta Basin, 11,700 Btu, 0.8 SO ₂	29.10	29.10	0.0%		

Coal exports and Imports are "as reported" (not revised); *Steam excludes lignite & anthracite. All data in this report are preliminary and subject to revision. r/ revised.

Sources: EIA; Edison Electric Institute; American Iron & Steel Institute; Association of American Railroads; Dept. of Commerce; S&P Global; NGI's Daily Gas Price Index



NMA
THE AMERICAN RESOURCE

National Mining Association Web Site: [http:// www.nma.org](http://www.nma.org)

EIA Estimated Weekly U.S. Coal Production Overview									
Coal-Producing Region & State (thousand short tons)	Week Ended			Year to Date			52 Weeks Ended		
	8/29/2020 (week 35)	8/22/2020 (week 34)	8/31/2019 (week 35)	8/29/2020	8/29/2019	% Change	8/29/2020	8/31/2019	% Change
Alabama	207	214	282	7,245	9,960	-27.3	11,331	14,836	-23.6
Alaska	17	18	19	596	651	-8.5	914	1,007	-9.2
Arizona	.	.	48	.	3,642	-100.0	187	5,801	-96.8
Colorado	195	196	276	6,050	8,852	-31.7	9,989	13,398	-25.4
Illinois	617	663	962	21,229	32,727	-35.1	34,127	49,177	-30.6
Indiana	437	450	633	14,287	21,880	-34.7	23,789	33,754	-29.5
Kentucky Total	514	518	739	16,937	25,383	-33.3	27,458	38,437	-28.6
Eastern (KY)	180	177	283	5,780	9,924	-41.8	9,647	15,401	-37.4
Western (KY)	335	341	455	11,157	15,458	-27.8	17,811	23,037	-22.7
Louisiana	30	28	39	914	1,047	-12.7	1,394	1,509	-7.6
Maryland	25	26	31	791	992	-20.3	1,261	1,438	-12.3
Mississippi	44	44	60	1,366	1,853	-26.3	2,194	2,805	-21.8
Missouri	3	3	4	91	131	-30.8	148	218	-32.1
Montana	652	636	879	18,550	22,469	-17.4	30,302	36,590	-17.2
New Mexico	232	232	285	7,764	9,955	-22.0	12,265	14,964	-18.0
North Dakota	453	447	568	14,802	17,632	-16.1	24,007	27,554	-12.9
Ohio	100	102	151	3,292	5,513	-40.3	5,516	8,758	-37.0
Oklahoma	3	3	5	53	160	-67.0	119	330	-63.9
Pennsylvania Total	788	848	947	25,956	33,623	-22.8	42,147	50,179	-16.0
Anthracite (PA)	58	54	53	1,596	1,621	-1.5	2,571	2,292	12.2
Bituminous (PA)	730	795	894	24,360	32,002	-23.9	39,575	47,887	-17.4
Tennessee	10	10	12	261	274	-4.6	420	351	19.7
Texas	377	376	532	11,571	15,737	-26.5	18,992	23,577	-19.4
Utah	205	217	262	7,655	10,141	-24.5	11,846	14,728	-19.6
Virginia	212	213	275	6,918	8,493	-18.6	10,816	12,827	-15.7
West Virginia Total	1,417	1,486	1,915	44,996	64,329	-30.1	73,556	95,560	-23.0
Northern (WV)	710	746	931	22,557	32,180	-29.9	37,194	47,858	-22.3
Southern (WV)	707	740	984	22,439	32,149	-30.2	36,362	47,703	-23.8
Wyoming	4,519	4,605	6,149	138,459	182,796	-24.3	230,853	287,938	-19.8
Appalachian Total	2,939	3,078	3,897	95,239	133,108	-28.4	154,694	199,350	-22.4
Interior Total	1,846	1,907	2,692	60,668	88,993	-31.8	98,573	134,406	-26.7
Western Total	6,273	6,351	8,487	193,875	256,139	-24.3	320,362	401,980	-20.3
East of Mississippi River	4,372	4,576	6,008	143,278	205,026	-30.1	232,616	308,122	-24.5
West of Mississippi River	6,686	6,760	9,067	206,504	273,215	-24.4	341,014	427,614	-20.3
Bituminous and Lignite	11,000	11,282	15,023	348,186	476,619	-26.9	571,059	733,443	-22.1
Anthracite	58	54	53	1,596	1,621	-1.5	2,571	2,292	12.2
U.S. Total	11,058	11,336	15,076	349,782	478,240	-26.9	573,630	735,736	-22.0
Railroad Cars Loaded	62,919	64,500	86,661	1,962,792	2,697,615	-27.2	3,251,523	4,210,499	-22.8

Source: Energy Information Administration



Weekly Electric Output

Volume 88 No. 35

OUTPUT FOR WEEK ENDED - Aug 29, 2020

Sep 02, 2020

The net available amount of electric energy distributed by the Total Electric Utility Industry* for the week ended Saturday, **Aug 29, 2020** was **90,683** gigawatthours (GWh), according to the Edison Electric Institute. This is equivalent to **187** on the weekly electric output index.

WEEKLY ELECTRIC OUTPUT BY GEOGRAPHIC DIVISION

(48 CONTIGUOUS STATES)

	Week Ended August 29		52 Weeks Ended August 29	
	GWh Output	% Increase Over Corresponding Week of 2019	GWh Output	% Increase Over Corresponding Period of 2019
New England	2,484	12.2	115,021	-3.3
Mid-Atlantic	9,764	19.6	415,809	-4.1
Central Industrial	14,652	21.1	641,897	-3.9
West Central	7,882	26.4	324,939	-1.7
Southeast	22,054	11.6	996,465	-3.8
South Central	17,673	-0.9	764,628	0.9
Rocky Mountain	7,035	1.3	287,197	2.2
Pacific Northwest	2,573	-3.9	155,471	-0.9
Pacific Southwest	6,566	0.0	265,527	-0.9
Total United States	90,683	9.9	3,966,954	-2.1

WEEKLY ELECTRIC OUTPUT IN PREVIOUS WEEKS--GWh

Week Ended	2020	Week Ended	2019	% Inc. (20/19)	52 Weeks Ended	2020	% Inc. (20/19)
Aug 08	85,979	Aug 10	90,200	-4.7	Aug 08	3,960,495	-2.3
Aug 15	91,497	Aug 17	90,024	1.6	Aug 15	3,961,968	-2.3
Aug 22	86,400	Aug 24	89,601	-3.6	Aug 22	3,958,767	-2.4
Aug 29	90,683	Aug 31	82,497	9.9	Aug 29	3,966,954	-2.1
Aug 29	2,685,060	Aug 31	2,760,975	-2.7	YEAR TO DATE, FIRST 35 WEEKS		

WEEKLY ELECTRIC OUTPUT INDEX--TOTAL U.S.*

SEASONALLY ADJUSTED 1982 = 100

Week Ended	2020	Week Ended	2019	Week Ended	2018
Aug 08	172	Aug 10	181	Aug 11	184
Aug 15	183	Aug 17	185	Aug 18	173
Aug 22	175	Aug 24	186	Aug 25	163
Aug 29	187	Aug 31	174	Sep 01	175

* Excludes Alaska and Hawaii.

+ Includes investor-owned companies, cooperatives and government-owned utilities.

Copyright © 2020 Edison Electric Institute. All rights reserved.

EEl WEEKLY ELECTRIC OUTPUT BY GEOGRAPHIC DIVISION
(48 CONTIGUOUS STATES)

	Week Ended			NMA CUMULATIVE JANUARY WEEK ONE TO			52 Weeks Ended		
	29-Aug 2020 GWh Output	31-Aug 2019 GWh Output	% Increase Over Corresponding Week	29-Aug 2020 GWh Output	31-Aug 2019 GWh Output	% Increase Over Corresponding Week	29-Aug 2020 GWh Output	31-Aug 2019 GWh Output	% Increase Over Corresponding Week
New England	2,484	2,213	12.2%	78,273	80,387	-2.6%	115,021	118,920	-3.3%
Mid-Atlantic	9,764	8,164	19.6%	282,556	295,264	-4.3%	415,809	433,501	-4.1%
Central Industrial	14,652	12,095	21.1%	436,493	455,071	-4.1%	641,897	667,966	-3.9%
West Central	7,882	6,236	26.4%	219,922	224,853	-2.2%	324,939	330,652	-1.7%
Southeast	22,054	19,756	11.6%	672,159	703,138	-4.4%	996,465	1,036,242	-3.8%
South Central	17,673	17,842	-0.9%	519,608	524,864	-1.0%	764,628	757,723	0.9%
Rocky Mountain	7,035	6,943	1.3%	193,390	190,083	1.7%	287,197	280,959	2.2%
Pacific Northwest	2,573	2,678	-3.9%	104,616	106,646	-1.9%	155,471	156,812	-0.9%
Pacific Southwest	6,566	6,570	-0.1%	178,044	180,671	-1.5%	265,527	268,025	-0.9%
Total United States ^{1/}	90,683	82,497	9.9%	2,685,061	2,760,977	-2.7%	3,966,954	4,050,800	-2.1%
Coal Regions Only ^{2/}	79,060	71,036	11.3%	2,324,128	2,393,273	-2.9%	3,430,935	3,507,043	-2.2%

Notes: EEI output data are an estimate of electricity load made available for distribution derived as weekly net generation + purchases from non-utilities + net imports - exports - sales for resale. It is not meant to be a measure of electricity generation for the U.S. EEI survey data represent the majority of national distribution (large utilities, large government power projects, some independent and large municipal power projects). The remaining segment of the industry (smaller producers) is estimated. Non-utility generation is captured via direct sales to utilities.

^{1/} Excludes Alaska and Hawaii

^{2/} Excludes New England and Pacific regions

SOURCE: Edison Electric Institute (EEI), *Weekly Electric Output Report*.

AMERICAN IRON AND STEEL INSTITUTE
 25 Massachusetts Avenue, NW, Suite 800
 Washington, D.C. 20001

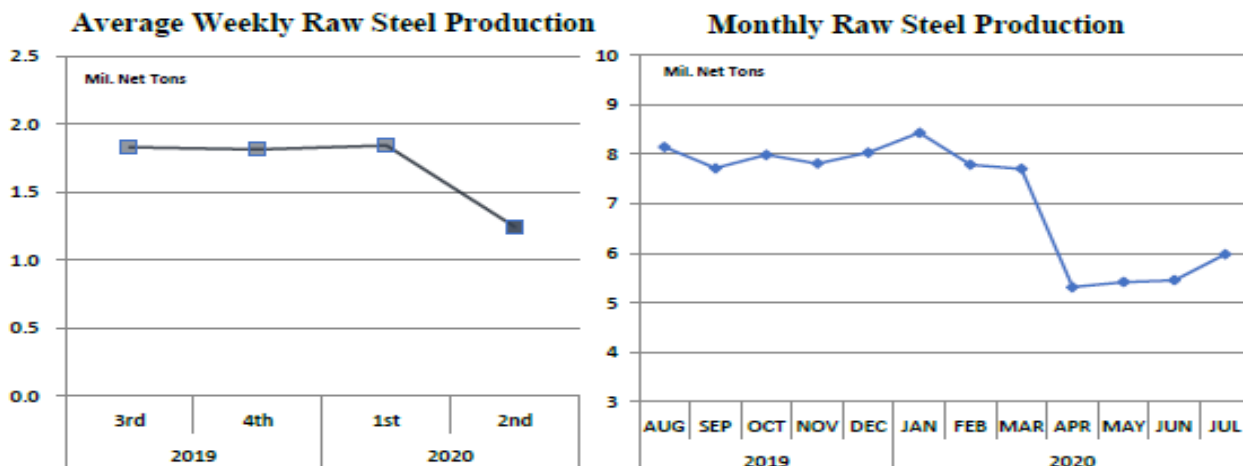
August 31, 2020

ESTIMATED WEEKLY RAW STEEL * PRODUCTION

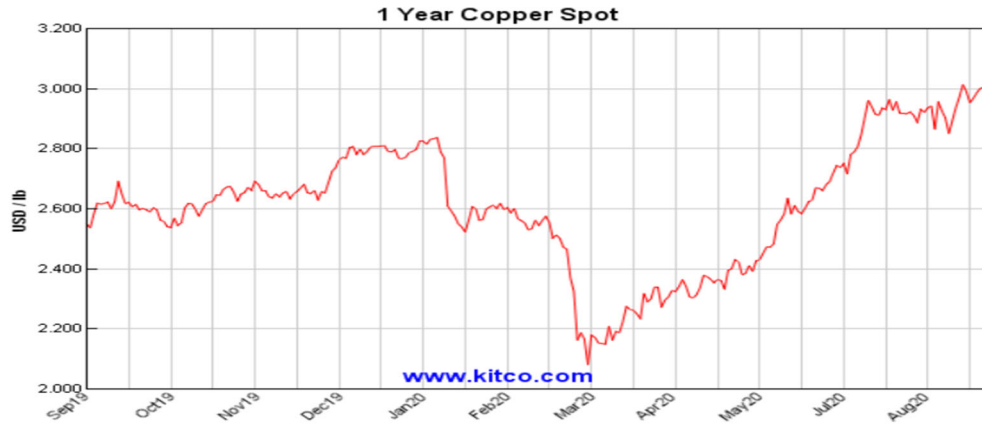
<u>Period</u>	<u>Thousand Net Tons</u>	<u>Percent Change from Previous Period</u>	<u>Percent Capability Utilization**</u>	<u>Production by District</u>		
				<u>Week Ending Aug 29</u>	<u>Week Ending Aug 15</u>	
<u>Week Ending</u>				North East	113	134
				Great Lakes	478	482
August 29, 2020	1,383	-2.1	61.7	Midwest	162	157
August 29, 2019	1,841	-24.9	79.1	Southern	556	567
August 22, 2020	1,412	2.5	63.0	Western	74	72
				Total	1,383	1,412
<u>Year-to-Date +</u>						
August 29, 2020	51,841	-20.3	66.0			
August 29, 2019	64,917	-	80.7			

*Raw steel production tonnage included in this report is estimated based on a sampling of steel producers (50% of domestic producers). Therefore, this report should be used primarily to assess production trends. The AISI production report "AIS 7," produced monthly and available by subscription, provides a more accurate summary of steel production based on data supplied by companies representing approximately 75% of U.S. production capacity plus includes revisions for previous months.

NOTE: Capacity for the third quarter 2020 is approximately 29.4 million net tons vs. 30.6 million net tons for the same period last year, and 29.1 million tons for the second quarter of 2020.



*Steel in the first solid state after melting suitable for further processing or sale, including ingots, steel for castings and strand or pressure cast blooms, slabs or other product forms. ** Based on tonnage capability to produce raw steel for a sustained full order book.



Source: Kitco website - www.kitco.com/connecting.html



Source: Kitco website - www.kitco.com/connecting.html

U.S. Rail Traffic¹
 Week 35, 2020 – Ended August 29, 2020

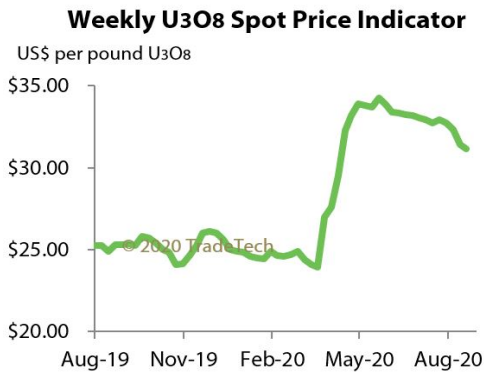
	This Week		Year-To-Date		
	Cars	vs 2019	Cumulative	Avg/wk ²	vs 2019
Total Carloads	225,703	-15.9%	7,448,257	212,807	-16.0%
Chemicals	30,935	-6.7%	1,074,379	30,697	-5.0%
Coal	62,919	-27.4%	1,992,886	56,940	-27.3%
Farm Products excl. Grain, and Food	15,132	-6.1%	533,304	15,237	-2.3%
Forest Products	9,373	-14.2%	323,627	9,246	-6.7%
Grain	21,663	-1.7%	730,869	20,882	-5.2%
Metallic Ores and Metals	19,676	-16.5%	620,243	17,721	-20.0%
Motor Vehicles and Parts	16,599	-4.8%	406,448	11,613	-28.3%
Nonmetallic Minerals	29,841	-17.8%	1,045,851	29,881	-13.8%
Petroleum and Petroleum Products	10,214	-17.0%	390,173	11,148	-12.4%
Other	9,351	-6.5%	330,477	9,442	-1.3%
Total Intermodal Units	282,604	3.4%	8,610,477	246,014	-7.7%
Total Traffic	508,307	-6.2%	16,058,734	458,821	-11.8%

¹ Excludes U.S. operations of Canadian Pacific, CN and GMXT.

² Average per week figures may not sum to totals as a result of independent rounding.

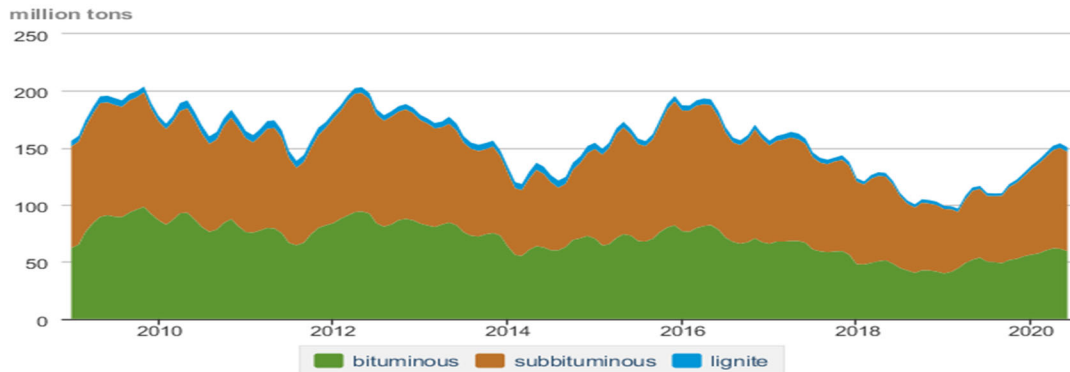
Source: AAR website - <https://www.aar.org/Pages/NEWS-and-EVENTS.aspx>

Trade Tech's and UX's Uranium Price Indicators



Sources: Trade Tech, Uranium Info Website – www.uranium.info ; Source: Ux Consulting Co., LLC – <http://www.uxc.com>

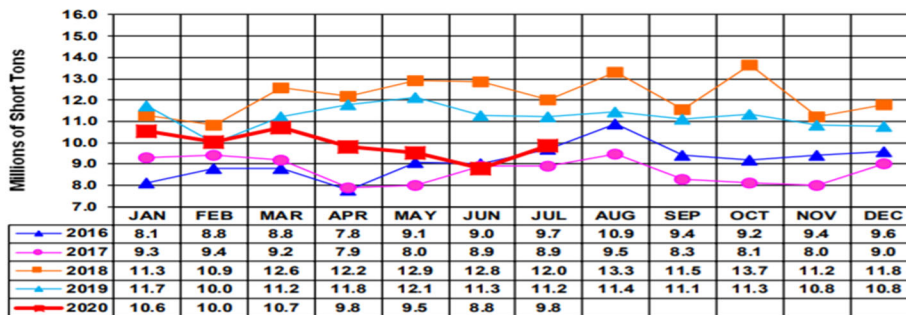
Coal stocks by type, January 2009 - June 2020



Source: U.S. Energy Information Administration

Source: Energy Information Administration, Electric Monthly Update

Coal and Coke Monthly Indicator for Internal U.S. Waterways



For the Internal U.S. Waterway Monthly Indicators, estimates for the most recent month are based on lock performance management data. The estimates will be superseded by actual data as it becomes available.

Source: Waterborne Commerce Statistics Center

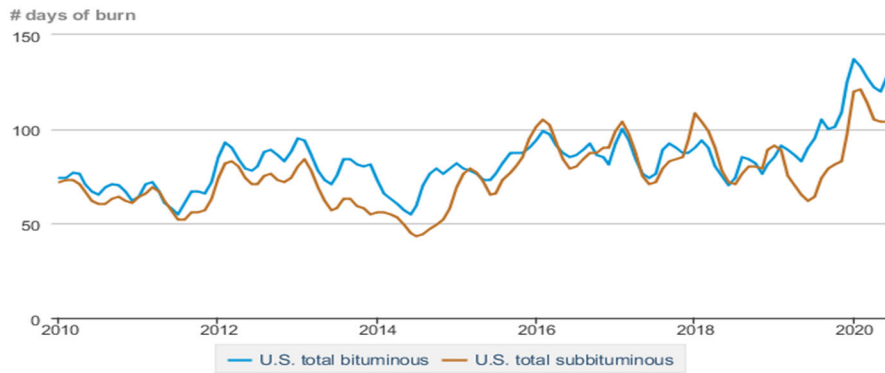
Average weekly coal commodity spot prices
dollars per short ton

	Week ending					Week ago
	07/31/20	08/07/20	08/14/20	08/21/20	08/28/20	change
Central Appalachia 12,500 Btu, 1.2 SO ₂	\$50.75	\$55.50	\$55.50	\$55.50	\$55.50	\$0.00
Northern Appalachia 13,000 Btu, < 3.0 SO ₂	\$42.45	\$42.45	\$42.45	\$42.45	\$42.45	\$0.00
Illinois Basin 11,800 Btu, 5.0 SO ₂	\$34.05	\$34.05	\$34.05	\$34.05	\$34.05	\$0.00
Powder River Basin 8,800 Btu, 0.8 SO ₂	\$12.00	\$11.60	\$11.60	\$11.60	\$11.60	\$0.00
Uinta Basin 11,700 Btu, 0.8 SO ₂	\$29.10	\$29.10	\$29.10	\$29.10	\$29.10	\$0.00

Source: With permission, S&P Global

Source: Energy Information Administration (with permission from S&P Global), Coal Market Report

Days of burn by non-lignite coal rank, January 2010 - June 2020



Source: U.S. Energy Information Administration

Source: Energy Information Administration, Electricity Monthly Update Report

Temperature – heating & cooling degree days (week ending Aug 20)

Region	HDD Current	HDD deviation from:		CDD Current	CDD deviation from:	
		normal	last year		normal	last year
New England	3	-1	3	28	-4	-27
Middle Atlantic	1	-2	1	44	-2	-34
E N Central	5	-1	3	40	-4	-19
W N Central	2	-4	0	51	-7	-10
South Atlantic	0	0	0	89	0	-23
E S Central	0	0	0	85	0	-21
W S Central	0	0	0	129	9	-19
Mountain	0	-7	0	103	34	15
Pacific	0	-4	0	101	58	48
United States	2	-2	1	76	9	-9

Note: HDD = heating degree day; CDD = cooling degree day

Source: National Oceanic and Atmospheric Administration

Source: Energy Information Administration, Natural Gas Weekly Update.

USGS Production of Selected Mineral Commodities	2020 Year to Date - 1st Quarter	2019 Year to Date - 1st Quarter	Percent Change
Aluminum, secondary (000 Mt.)	212.0	209.0	1%
Cement (Mil. Mt.)	18.0	17.0	6%
Copper (000 Mt.)	232.0	303.0	-23%
Gold (Mt.)	50.4	50.2	0%
Gypsum (Mil. Mt.)	4.4	4.2	5%
Iron Ore (Mil. Mt.)	11.8	10.8	9%
Lead (000 Mt.)	68.8	60.7	13%
Molybdenum (000 Mt.)	13.3	10.3	29%
Phosphate rock (Mil. Mt.)	5.7	5.4	6%
Sand & gravel, construction (Mil. Mt.)	173.0	163.0	6%
Silver (Mt.)	240.0	227.0	6%
Soda ash (Mil. Mt.)	2.9	2.9	0%
Stone, crushed (Mil. Mt.)	291.0	286.0	2%
Zinc (000 Mt.)	175.0	152.0	15%

Natural gas spot prices (Henry Hub)

dollars per million British thermal units



 Source: Natural Gas Intelligence

Source: Energy Information Administration, *Natural Gas Weekly*.

EIA Coal Stocks and Average Number of Days of Burn (Power Sector)

Coal stocks and average number of days of burn for non-lignite coal by region (electric power sector)

Zone	Coal	June 2020		June 2019		% Change of Stocks	May 2020		% Change of Stocks
		Stocks (1000 tons)	Days of Burn	Stocks (1000 tons)	Days of Burn		Stocks (1000 tons)	Days of Burn	
Northeast	Bituminous	3,857	278	4,129	196	-6.6%	3,895	282	-1.0%
	Subbituminous	162	232	163	227	-1.1%	162	253	0.0%
South	Bituminous	25,421	116	24,501	91	3.8%	25,808	110	-1.5%
	Subbituminous	7,789	82	4,739	45	64.4%	8,398	88	-7.3%
Midwest	Bituminous	14,156	117	10,844	78	30.5%	14,036	112	0.9%
	Subbituminous	30,931	126	22,647	73	36.6%	31,397	122	-1.5%
West	Bituminous	4,059	166	3,776	71	7.5%	3,950	165	2.8%
	Subbituminous	29,708	93	20,773	58	43.0%	29,864	94	-0.5%
U.S. Total	Bituminous	47,493	128	43,250	90	9.8%	47,689	120	-0.4%
	Subbituminous	68,589	104	48,322	62	41.9%	69,821	104	-1.8%

Source: Energy Information Administration, *Electricity Monthly Update*

EIA Working Natural Gas Underground Storage

Working gas in underground storage

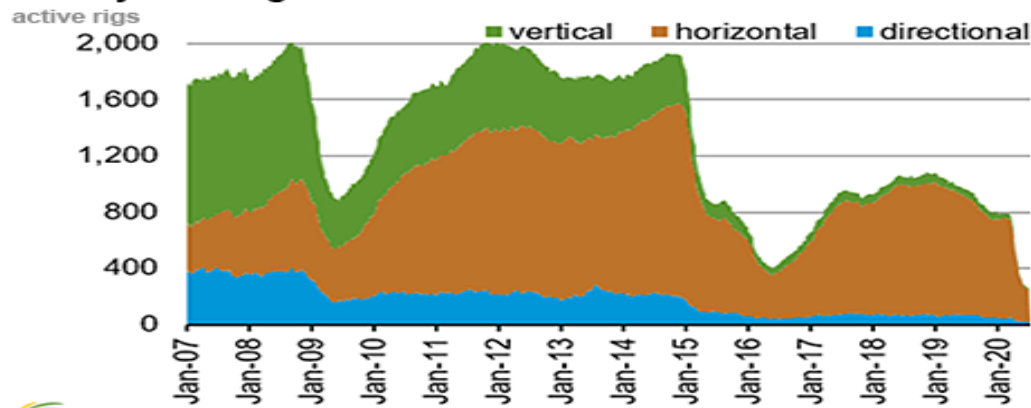
Region	Stocks billion cubic feet (Bcf)		
	2020-08-21	2020-08-14	change
East	775	750	25
Midwest	904	880	24
Mountain	212	209	3
Pacific	306	313	-7
South Central	1,223	1,223	0
Total	3,420	3,375	45

Source: Form EIA-912, *Weekly Underground Natural Gas Storage Report*

Source: Energy Information Administration, *Natural Gas Weekly Update*

EIA Natural Gas Rig Count

Weekly total rig count



Source: Baker Hughes Co.

Source: Energy Information Administration, *Natural Gas Weekly Update*

EIA Oil and Natural Gas Rig Productivity

Region	New-well oil production per rig barrels/day			New-well gas production per rig thousand cubic feet/day		
	August 2020	September 2020	change	August 2020	September 2020	change
Anadarko	1,275	1,301	26	7,641	7,794	153
Appalachia	169	171	2	24,204	24,930	726
Bakken	2,099	2,368	269	2,839	3,207	368
Eagle Ford	2,418	2,466	48	8,265	8,430	165
Haynesville	19	20	1	11,196	11,207	11
Niobrara	1,932	2,028	96	5,462	5,571	109
Permian	963	1,127	164	1,873	2,098	225
Rig-weighted average	898	982	84	7,189	7,409	220

Source: Energy Information Administration, *Drilling Productivity Report*