



NATIONAL MINING ASSOCIATION

WEEKLY STATISTICAL SUMMARY

August 8, 2025 Edition
(Data for Week Ending August 2, 2025)

Prepared by
National Mining Association

101 Constitution Avenue NW, Suite 500 East
Washington, DC 20001
(202) 463-2600
www.nma.org



NMA WEEKLY STATISTICAL SUMMARY

Vol. 62, No. 31 | Dated 08/08/25

COAL PRODUCTION, CONSUMPTION & TRADE

	Week Ended			* Cumulative Jan 1 to		
	8/02/25	8/03/24	% Chg	8/02/25	8/02/24	% Chg
EIA Coal Production (000 Tons):						
Week Ended/Year to Date	10,967	10,160	7.9%	316,671	294,595	7.5%
52 Weeks Ended	533,296	528,151	1.0%			
AAR Coal Rail Cars Loaded:	61,962	58,978	5.1%	1,763,224	1,674,161	5.3%
EIA Coal Production	June 25/24		% Chg	Jan - June 25/24		% Chg
Month Ended - June	44,385	43,004	3.2%	266,642	247,954	7.5%

U.S. Department of Commerce Coal Trade (000 Tons)

	June 25/24		% Chg	Jan - June 25/24		% Chg
Coal Exports:						
Metallurgical	4,043	5,907	-31.6%	24,249	28,087	-13.7%
Steam Bit. *	2,847	4,036	-29.5%	22,247	24,107	-7.7%
Lignite	4	6	-33.3%	46	48	-4.2%
Anthracite	<u>60</u>	<u>68</u>	-11.8%	<u>289</u>	<u>394</u>	-26.6%
Total	6,954	10,017	-30.6%	46,831	52,636	-11.0%
Coal Imports:	232	203	14.3%	1,324	865	53.1%

	Week Ended			Cumulative Week 1 to		
	8/02/25	8/03/24	% Chg	8/02/25	8/03/24	% Chg
EI Electric Total Output (Mil. Kwh)	99,367	98,465	0.9%	2,579,295	2,501,615	3.1%
EI Coal Region Output (Mil. Kwh)	87,788	86,362	1.7%	2,251,702	2,177,890	3.4%
AISI Raw Steel Output (000 Tons)	1,782	1,705	4.5%	52,346	51,766	1.1%

EIA AVERAGE COAL & NATURAL GAS SPOT PRICES

Dollars Per Short Ton

Average Coal Spot Prices (\$/Short Ton)	Week Ending			Natural Gas Spot Prices (\$/MMBtu)	
	08/01/25	07/25/25	% Chg	Wed.	07/30/25
Central App, 12,500 Btu, 1.2 SO ₂	\$79.00	\$79.00	0.0%	Henry Hub	2.98
Northern App, 13,000 Btu, < 3.0 SO ₂	58.00	58.00	0.0%	New York	2.58
Illinois Basin, 11,800, 5.0 SO ₂	48.25	48.25	0.0%	Chicago	2.70
Powder River Basin, 8,800 Btu 0.8 SO ₂	14.30	14.30	0.0%	Cal.Comp.Avg.	2.93

Coal exports and Imports are "as reported" (not revised); *Steam bit. excludes lignite & anthracite. All data in this report are preliminary and subject to revision. r/ revised.

Sources: EIA; Edison Electric Institute; American Iron & Steel Institute; Association of American Railroads; Dept. of Commerce; S&P Global

EIA Estimated Weekly U.S. Coal Production Overview									
Coal-Producing Region & State (thousand short tons)	Week Ended			Year to Date			52 Weeks Ended		
	8/2/2025 (week 31)	7/26/2025 (week 30)	8/3/2024 (week 31)	8/2/2025	8/2/2024	% Change	8/2/2025	8/3/2024	% Change
Alabama	300	315	242	9,000	8,478	6.2	14,873	13,691	8.6
Alaska	21	20	15	628	591	6.4	1,039	984	5.6
Colorado	240	243	218	7,466	7,552	-1.1	12,278	12,998	-5.5
Illinois	724	723	678	22,949	21,408	7.2	35,882	35,740	0.4
Indiana	392	395	361	11,954	12,136	-1.5	19,918	21,133	-5.7
Kentucky total	466	476	435	14,584	14,879	-2.0	23,958	25,679	-6.7
Eastern (KY)	199	203	189	5,940	6,246	-4.9	10,002	10,935	-8.5
Western (KY)	267	273	246	8,644	8,633	0.1	13,955	14,743	-5.3
Louisiana	6	6	6	159	151	4.9	271	265	2.3
Maryland	29	29	24	820	767	6.9	1,371	1,274	7.6
Mississippi	50	53	50	1,402	1,103	27.2	2,335	2,366	-1.3
Missouri	3	3	3	82	90	-8.3	139	146	-4.8
Montana	596	609	585	15,826	15,151	4.5	27,583	27,088	1.8
New Mexico	151	149	153	3,855	4,340	-11.2	6,694	7,176	-6.7
North Dakota	564	574	476	16,867	14,854	13.6	27,366	24,487	11.8
Ohio	37	36	29	1,099	1,079	1.8	1,811	1,791	1.1
Oklahoma	.	.	.	s	s	12.7	s	1	-100.0
Pennsylvania total	897	903	814	24,979	23,189	7.7	42,386	40,880	3.7
Anthracite (PA)	61	63	53	1,866	1,831	1.9	3,091	3,117	-0.8
Bituminous (PA)	836	841	760	23,113	21,358	8.2	39,295	37,763	4.1
Texas	307	304	275	8,024	6,442	24.6	13,843	12,214	13.3
Utah	212	208	183	5,154	3,745	37.6	8,850	6,412	38.0
Virginia	216	221	193	6,026	5,711	5.5	10,043	9,583	4.8
West Virginia total	1,714	1,753	1,481	51,675	47,664	8.4	83,585	80,234	4.2
Northern (WV)	892	909	759	27,408	23,881	14.8	43,667	40,917	6.7
Southern (WV)	822	843	722	24,267	23,783	2.0	39,918	39,317	1.5
Wyoming	4,042	4,029	3,941	114,119	105,268	8.4	199,070	204,008	-2.4
Appalachian total	3,392	3,460	2,972	99,539	93,133	6.9	164,071	158,389	3.6
Interior total	1,749	1,756	1,617	53,215	49,963	6.5	86,344	86,608	-0.3
Western total	5,826	5,832	5,571	163,917	151,500	8.2	282,880	283,154	-0.1
East of Mississippi River	4,825	4,904	4,306	144,489	136,413	5.9	236,162	232,372	1.6
West of Mississippi River	6,141	6,144	5,855	172,183	158,183	8.9	297,134	295,779	0.5
Bituminous and lignite	10,906	10,985	10,107	314,805	292,764	7.5	530,204	525,033	1.0
Anthracite	61	63	53	1,866	1,831	1.9	3,091	3,117	-0.8
U.S. total	10,967	11,048	10,160	316,671	294,595	7.5	533,296	528,151	1.0
Railroad cars loaded	61,962	62,386	58,978	1,763,224	1,674,161	5.3	3,039,729	3,086,388	-1.5

Source: Energy Information Administration



Weekly Electric Output

Volume 93 No. 31

OUTPUT FOR WEEK ENDED - Aug 02, 2025

The net available amount of electric energy distributed by the Total Electric Utility Industry+ for the week ended Saturday, **Aug 02, 2025** was **99,367** gigawatthours (GWh), according to the Edison Electric Institute.

WEEKLY ELECTRIC OUTPUT BY GEOGRAPHIC DIVISION

(48 CONTIGUOUS STATES)

	Week Ended August 02		52 Weeks Ended August 02	
	GWh Output	% Increase Over Corresponding Week of 2024	GWh Output	% Increase Over Corresponding Week of 2024
New England	2,602	-7.14 %	113,422	-0.04 %
Mid-Atlantic	10,098	-3.12 %	416,038	0.32 %
Central Industrial	15,270	-0.93 %	666,133	2.89 %
West Central	7,851	-2.65 %	340,965	2.05 %
Southeast	25,451	6.19 %	1,053,488	2.14 %
South Central	21,967	3.18 %	925,970	5.24 %
Rocky Mountain	7,151	-0.71 %	306,683	2.55 %
Pacific Northwest	3,060	1.05 %	162,146	1.88 %
Pacific Southwest	5,916	-5.68 %	274,506	2.11 %
Total United States	99,367	0.92 %	4,259,351	2.68 %

WEEKLY ELECTRIC OUTPUT IN PREVIOUS WEEKS--GWh

Week Ended	2025	Week Ended	2024	% Inc. (25/24)	52 Weeks Ended	2025	% Inc. (25/24)
Jul 12	98,133	Jul 13	97,089	1.08 %	Jul 12	4,248,982	2.41 %
Jul 19	99,373	Jul 20	97,296	2.13 %	Jul 19	4,251,059	2.41 %
Jul 26	98,772	Jul 27	91,383	8.09 %	Jul 26	4,258,448	2.74 %
Aug 02	99,367	Aug 03	98,465	0.92 %	Aug 02	4,259,351	2.68 %
Aug 02	2,579,295	Aug 03	2,501,615	3.11 %	YEAR TO DATE, FIRST 31 WEEKS		

**EEl WEEKLY ELECTRIC OUTPUT BY GEOGRAPHIC DIVISION
(48 CONTIGUOUS STATES)**

	Week Ended			NMA CUMULATIVE JANUARY WEEK ONE TO			52 Weeks Ended		
	2-Aug 2025 GWh Output	3-Aug 2024 GWh Output	% Increase Over Corresponding Week	2-Aug 2025 GWh Output	3-Aug 2024 GWh Output	% Increase Over Corresponding Week	2-Aug 2025 GWh Output	3-Aug 2024 GWh Output	% Increase Over Corresponding Week
New England	2,602	2,802	-7.1%	68,928	68,459	0.7%	113,422	113,467	0.0%
Mid-Atlantic	10,098	10,423	-3.1%	254,224	252,118	0.8%	416,038	414,701	0.3%
Central Industrial	15,270	15,414	-0.9%	410,302	397,132	3.3%	666,133	647,413	2.9%
West Central	7,851	8,065	-2.7%	206,057	198,726	3.7%	340,965	334,107	2.1%
Southeast	25,451	23,968	6.2%	644,475	626,883	2.8%	1,053,488	1,031,402	2.1%
South Central	21,967	21,289	3.2%	556,706	525,267	6.0%	925,970	879,898	5.2%
Rocky Mountain	7,151	7,203	-0.7%	179,938	177,763	1.2%	306,683	299,045	2.6%
Pacific Northwest	3,060	3,028	1.1%	100,391	97,953	2.5%	162,146	159,150	1.9%
Pacific Southwest	5,916	6,273	-5.7%	158,266	157,311	0.6%	274,506	268,830	2.1%
Total United States ^{1/}	<u>99,366</u>	<u>98,465</u>	0.9%	<u>2,579,287</u>	<u>2,501,613</u>	3.1%	<u>4,259,351</u>	<u>4,148,013</u>	2.7%
Coal Regions Only ^{2/}	87,788	86,362	1.7%	2,251,702	2,177,890	3.4%	3,709,277	3,606,566	2.8%

Notes: EEI output data are an estimate of electricity load made available for distribution derived as weekly net generation + purchases from non-utilities + net imports - exports - sales for resale. It is not meant to be a measure of electricity generation for the U.S. EEI survey data represent the majority of national distribution (large utilities, large government power projects, some independent and large municipal power projects). The remaining segment of the industry (smaller producers) is estimated. Non-utility generation is captured via direct sales to utilities. Data may not match weekly EEI report due to rounding.

^{1/} Excludes Alaska and Hawaii

^{2/} Excludes New England and Pacific regions

SOURCE: Edison Electric Institute (EEI), *Weekly Electric Output Report*.

AMERICAN IRON AND STEEL INSTITUTE
 25 Massachusetts Avenue, NW, Suite 800
 Washington, D.C. 20001

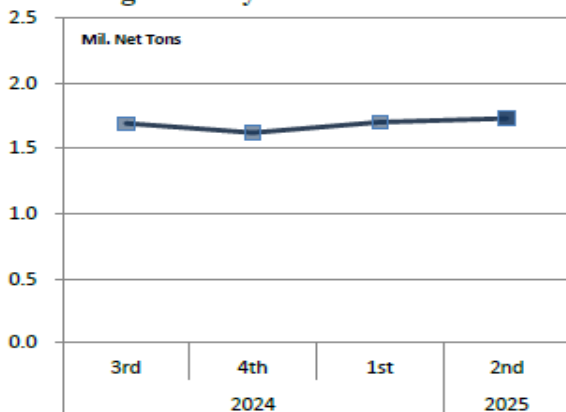
August 4, 2025

ESTIMATED WEEKLY RAW STEEL* PRODUCTION

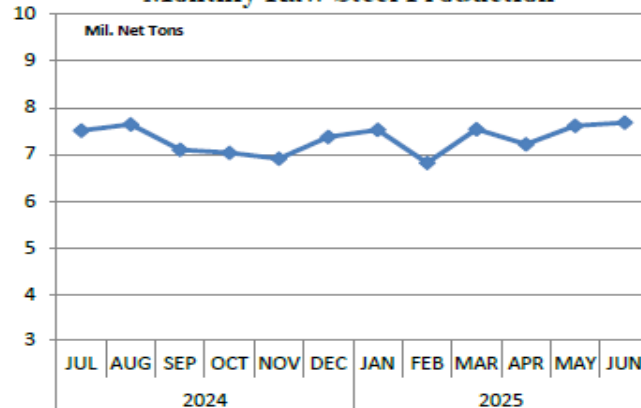
<u>Period</u>	<u>Thousand Net Tons</u>	<u>Percent Change from Previous Period</u>	<u>Percent Capacity Utilization**</u>	<u>Production by District</u>		
				<u>Week Ending</u>		
				<u>Aug 2</u>	<u>Jul 26</u>	
<u>Week Ending</u>				North East	123	113
				Great Lakes	561	559
August 2, 2025	1,782	0.3	78.7	Midwest	234	232
August 2, 2024	1,705	4.5	76.8	Southern	791	802
July 26, 2025	1,777	0.5	78.4	Western	73	71
				Total	1,782	1,777
<u>Year-to-Date +</u>						
August 2, 2025	52,346	1.1	76.4			
August 2, 2024	51,766	-	76.2			

*Raw steel production tonnage included in this report is estimated based on a sampling of steel producers (50% of domestic producers). Therefore, this report should be used primarily to assess production trends. The AISI production report "AIS 7," produced monthly and available by subscription, provides a more accurate summary of steel production based on data supplied by companies representing approximately 75% of U.S. production capacity plus includes revisions for previous months.

Average Weekly Raw Steel Production



Monthly Raw Steel Production



*Steel in the first solid state after melting suitable for further processing or sale, including ingots, steel for castings and strand or pressure cast blooms, slabs or other product forms. ** Based on tonnage capability to produce raw steel for a sustained full order book.

U.S. Rail Traffic¹
Week 31, 2025 – Ended August 2, 2025

	This Week		Year-To-Date		
	Cars	vs 2024	Cumulative	Avg/wk ²	vs 2024
Total Carloads	233,805	6.4%	6,828,409	220,271	2.8%
Chemicals	34,279	3.2%	1,023,696	33,022	1.9%
Coal	61,962	4.9%	1,787,586	57,664	6.1%
Farm Products excl. Grain, and Food	16,530	1.3%	522,730	16,862	2.2%
Forest Products	8,662	6.0%	255,857	8,253	-0.7%
Grain	21,557	25.7%	655,978	21,161	6.9%
Metallic Ores and Metals	22,037	6.4%	606,270	19,557	-1.9%
Motor Vehicles and Parts	15,822	10.2%	468,545	15,114	1.3%
Nonmetallic Minerals	32,593	4.0%	907,925	29,288	0.5%
Petroleum and Petroleum Products	10,829	-1.7%	319,047	10,292	-0.1%
Other	9,534	12.6%	280,775	9,057	5.2%
Total Intermodal Units	279,724	0.2%	8,334,202	268,845	4.7%
Total Traffic	513,529	2.9%	15,162,611	489,116	3.8%

¹ Excludes U.S. operations of CPKC, CN and GMXT.

² Average per week figures may not sum to totals as a result of independent rounding.

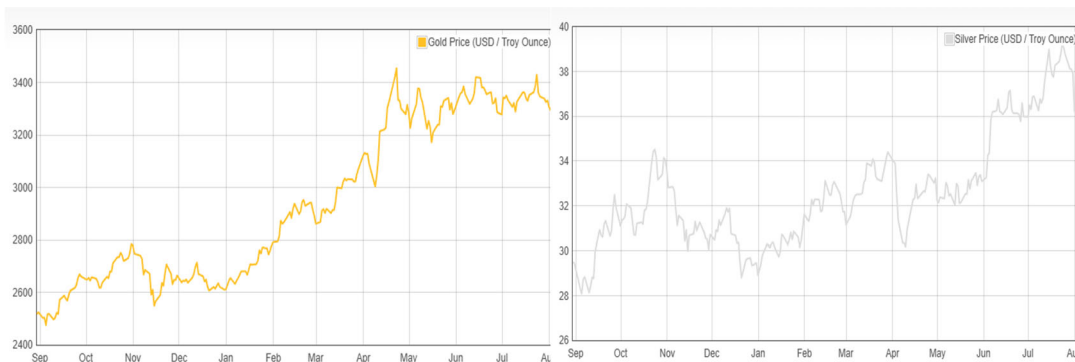
Source: AAR website - <https://www.aar.org/Pages/NEWS-and-EVENTS.aspx>

Copper, Gold and Silver Prices

Copper Prices:

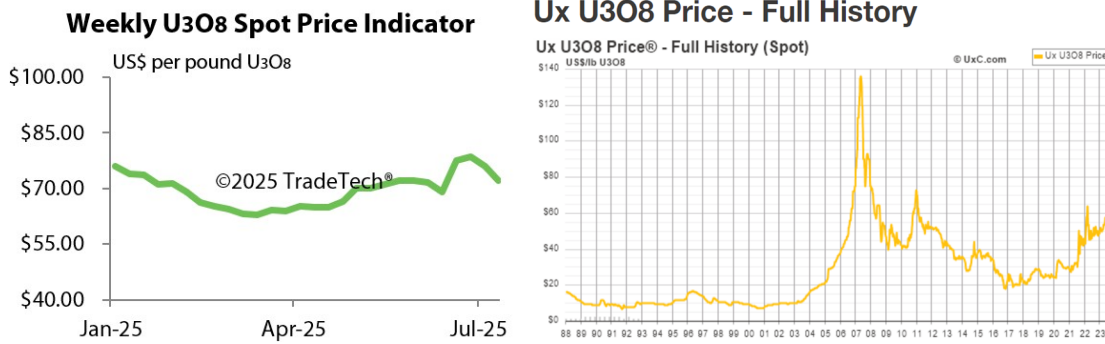


Gold and Silver Prices:



Source: Dailymetalprice.com - <https://www.dailymetalprice.com/metalprices.php>

Trade Tech's and UX's Uranium Price Indicators



Sources: Trade Tech, Uranium Info Website – www.uranium.info ; Source: Ux Consulting Co., LLC – <http://www.uxc.com>

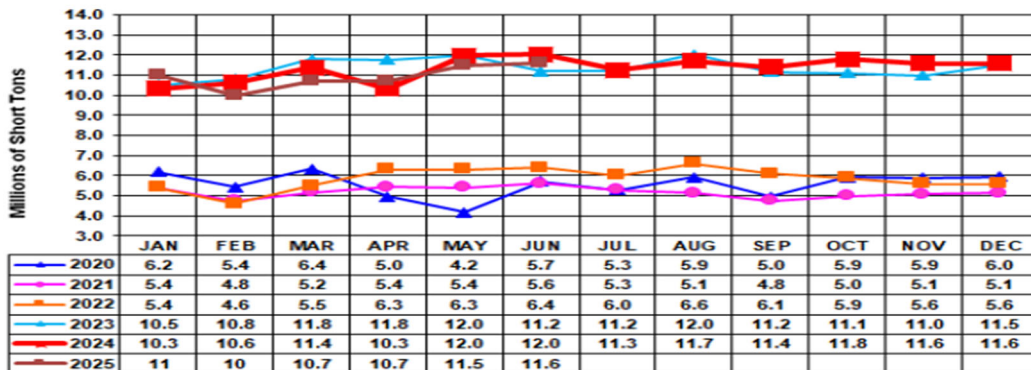
Coal stocks and average number of days of burn for non-lignite coal by region (electric power sector)

Zone	Coal	May 2025		May 2024			April 2025		
		Stocks (1000 tons)	Days of Burn	Stocks (1000 tons)	Days of Burn	% Change of Stocks	Stocks (1000 tons)	Days of Burn	% Change of Stocks
Northeast	Bituminous	1,691	203	2,273	251	-25.6%	1,180	111	43.4%
	Subbituminous
South	Bituminous	18,610	98	24,260	144	-23.3%	17,860	100	4.2%
	Subbituminous	5,481	71	7,102	91	-22.8%	5,359	78	2.3%
Midwest	Bituminous	10,214	100	12,411	121	-17.7%	9,723	104	5.1%
	Subbituminous	30,033	90	36,331	125	-17.3%	29,573	103	1.6%
West	Bituminous	2,741	155	3,726	185	-26.4%	2,966	179	-7.6%
	Subbituminous	31,536	134	33,755	133	-6.6%	30,447	135	3.6%
U.S. Total	Bituminous	33,256	105	42,670	144	-22.1%	31,728	106	4.8%
	Subbituminous	67,051	104	77,189	124	-13.1%	65,379	112	2.6%

Source: U.S. Energy Information Administration

Source: Energy Information Administration, Electric Monthly Update

Coal and Coke Monthly Indicator for Internal U.S. Waterways



For the Internal U.S. Waterway Monthly Indicators, estimates for the most recent month are based on lock performance management data. The estimates will be superseded by actual data as it becomes available.

Source: Waterborne Commerce Statistics Center

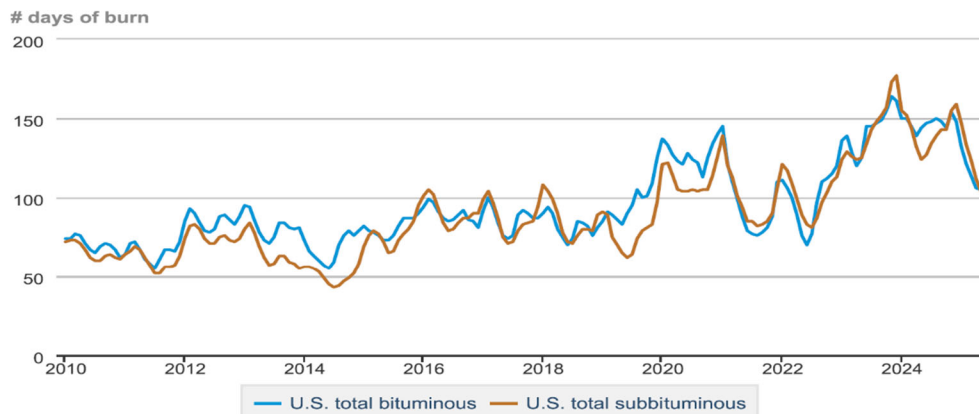
Average weekly coal commodity spot prices dollars per short ton

	Week ending					Week ago change
	07/04/25	07/11/25	07/18/25	07/25/25	08/01/25	
Central Appalachia 12,500 Btu, 1.2 SO ₂	\$79.00	\$79.00	\$79.00	\$79.00	\$79.00	\$0.00
Northern Appalachia 13,000 Btu, < 3.0 SO ₂	\$58.00	\$58.00	\$58.00	\$58.00	\$58.00	\$0.00
Illinois Basin 11,800 Btu, 5.0 SO ₂	\$49.00	\$48.25	\$48.25	\$48.25	\$48.25	\$0.00
Powder River Basin 8,800 Btu, 0.8 SO ₂	\$14.30	\$14.30	\$14.30	\$14.30	\$14.30	\$0.00

Data source: With permission, S&P Global

Source: Energy Information Administration (with permission from S&P Global), *Coal Market Report*

Days of burn by non-lignite coal rank, January 2010 - May 2025



Source: Energy Information Administration, *Electricity Monthly Update Report*

Temperature – heating & cooling degree days (week ending Jul 24)

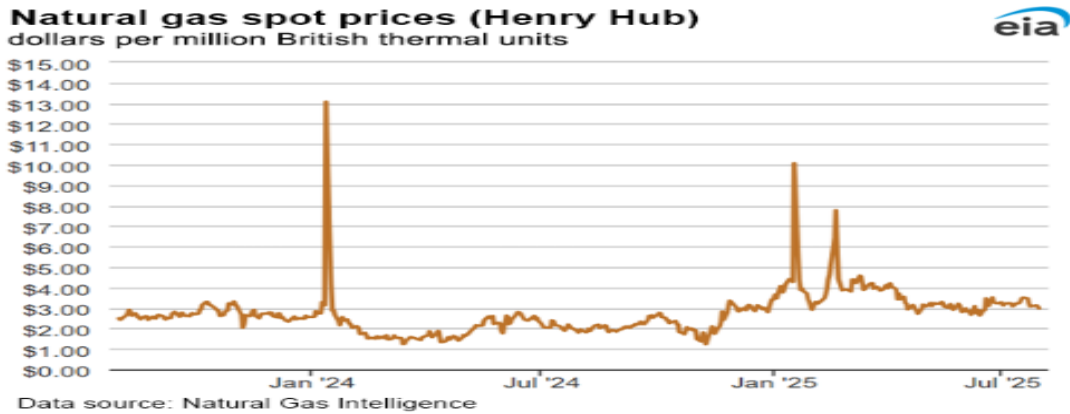
Region	HDDs			CDDs		
	Current total	Deviation from normal	Deviation from last year	Current total	Deviation from normal	Deviation from last year
New England	2	0	2	39	-5	-17
Middle Atlantic	0	-1	0	60	1	-4
E N Central	1	-1	-4	60	2	19
W N Central	2	-1	-1	81	9	36
South Atlantic	0	0	0	113	15	9
E S Central	0	0	0	116	21	30
W S Central	0	0	0	133	7	26
Mountain	0	-3	0	74	-6	-21
Pacific	1	-3	1	36	-9	-37
United States	1	-1	-1	79	4	4

Data source: National Oceanic and Atmospheric Administration
Note: HDDs=heating degree days; CDDs=cooling degree days

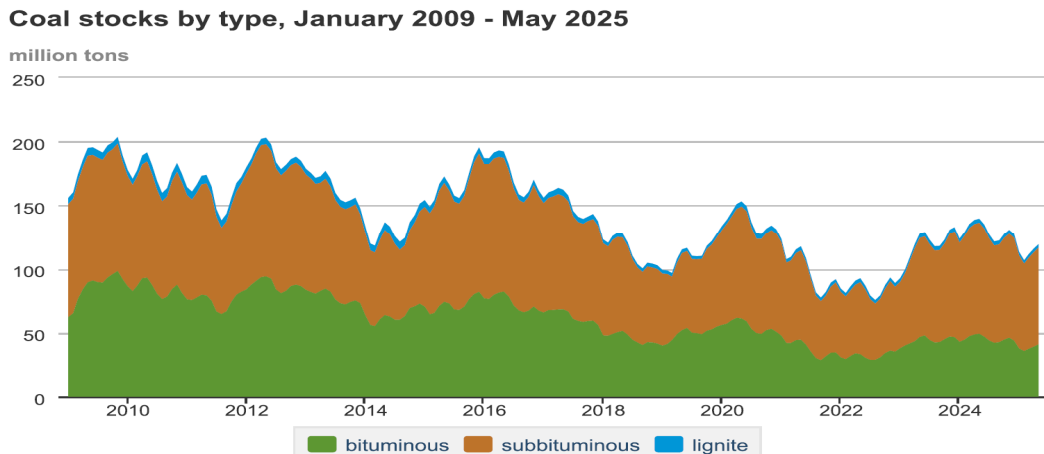
Source: Energy Information Administration, *Natural Gas Weekly Update*.

U.S. Production of Selected Mineral Commodities	2024 Year to Date - 3rd Quarter	2023 Year to Date - 3rd Quarter	Percent Change
Aluminum, secondary (000 Mt.)	670.0	686.0	-2%
Cement (Mil. Mt.)	62.5	66.9	-7%
Copper (000 Mt.)	777.0	835.0	-7%
Gold (Mt.)	118.0	124.0	-5%
Gypsum (Mil. Mt.)	14.2	14.0	1%
Iron Ore (Mil. Mt.)	34.6	32.9	5%
Lead (000 Mt.)	217.0	200.0	9%
Molybdenum (000 Mt.)	25.1	25.0	0%
Palladium (Mt.)	8.4	7.5	12%
Phosphate rock (Mil. Mt.)	14.9	14.9	0%
Platinum (Mt.)	2.5	2.2	14%
Sand & gravel, construction (Mil. Mt.)	684.0	731.0	-6%
Silver (Mt.)	771.0	764.0	1%
Soda ash (Mil. Mt.)	8.7	8.1	7%
Stone, crushed (Mil. Mt.)	1,110.0	1,170.0	-5%
Zinc (000 Mt.)	564.0	544.0	4%

Source: U.S. Geological Survey, Mineral Industry Surveys. Percent change based on USGS rounded numbers. 2024 data are preliminary estimates. W - withheld, N/A - not available



Source: Energy Information Administration, *Natural Gas Weekly*.



Source: Energy Information Administration, *Electricity Monthly Update*

Mining-Related Commodity Prices

Commodity Prices - Snapshot				
Metals Prices	Date	Price	Date	Price
Cobalt Spot Price (\$/lb)	7/25/25	\$15.12	8/5/25	\$15.12
Copper Spot Price (\$/lb)	7/29/25	\$5.63	8/5/25	\$4.36
Gold Spot Price (\$/ounce)	7/29/25	\$3,328.24	8/5/25	\$3,363.25
Lead Spot Price (\$/lb)	7/29/25	\$0.91	8/5/25	\$0.89
Lithium Spot Price (\$/kg)	7/29/25	\$10.19	8/5/25	\$9.90
Molybdenum Spot Price (\$/kg)	7/29/25	\$65.90	8/5/25	\$68.59
Nickel Spot Price (\$/lb)	7/29/25	\$6.92	8/5/25	\$6.83
Silver Spot Price (\$/ounce)	7/29/25	\$38.20	8/5/25	\$37.35
Steel HRC Price (\$/mt)	7/29/25	\$852.52	8/5/25	\$845.33
Steel Rebar Price (\$/mt)	7/29/25	\$465.63	8/5/25	\$447.73
Zinc Spot Price (\$/lb)	7/29/25	\$1.27	8/5/25	\$1.25
Energy Prices	Date	Price	Date	Price
Coal Price - Austr. Prem. Coking Coal Futures (\$/mt)	7/29/25	\$193.50	8/5/25	\$189.50
Coal Spot Price - Central Appalachian (\$/st)	7/25/25	\$79.00	8/1/25	\$79.00
Coal Spot Price - Newcastle futures (\$/mt)	7/29/25	\$115.05	8/5/25	\$114.44
Coal Spot Price - Rotterdam futures (\$/mt)	7/29/25	\$104.50	8/5/25	\$102.00
Natural Gas Spot Price - Henry Hub (\$/mmbtu)	7/23/25	\$3.07	7/30/25	\$2.90
Uranium Spot Price (\$/lb)	7/28/25	\$71.30	8/4/25	\$71.45

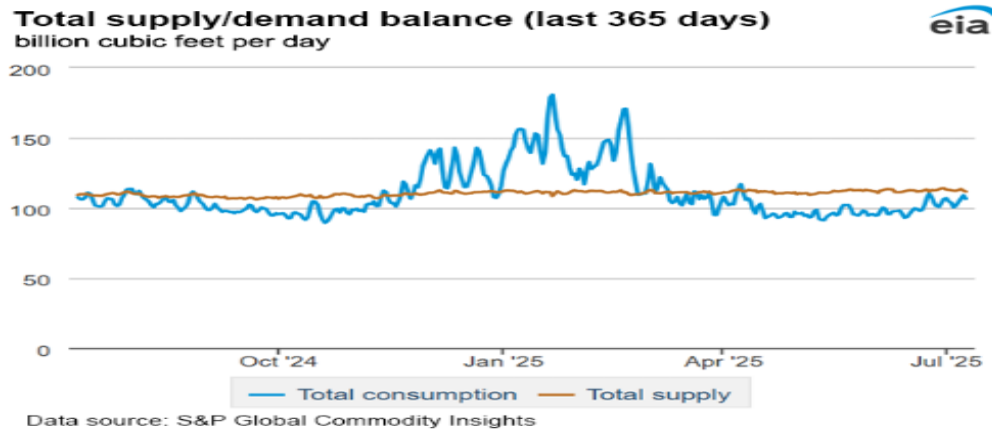
Sources: publically available data from eia.gov, dailymetalprice.com, tradingeconomics.com, sgxgroup.com, investing.com

EIA Working Natural Gas Underground Storage

Region	Stocks billion cubic feet (Bcf)		
	2025-07-25	2025-07-18	change
East	651	634	17
Midwest	765	746	19
Mountain	243	239	4
Pacific	302	297	5
South Central	1,162	1,159	3
Total	3,123	3,075	48

Data source: U.S. Energy Information Administration Form EIA-912, *Weekly Underground Natural Gas Storage Report*
 Note: Totals may not equal sum of components because of independent rounding.

Source: Energy Information Administration, *Natural Gas Weekly Update*



Source: Energy Information Administration, *Natural Gas Weekly Update*

USGS Cobalt – U.S. Trade, Reported Stocks and Listed Prices

Cobalt - May 2025	May-25	Year to Date
U.S. Imports for Consumption - Metals (mt)	1,230	5,300
U.S. Exports of Cobalt Materials - Cobalt Content (mt)	468	2,040
Reported LME Stocks of Cobalt Metal (mt)	140	-
Listed Prices by Type (\$/lb): US Spot & LME Cash Avg.	20.93	14.97

Source: USGS, Mineral Industry Survey, Cobalt in May 2025, July 2025

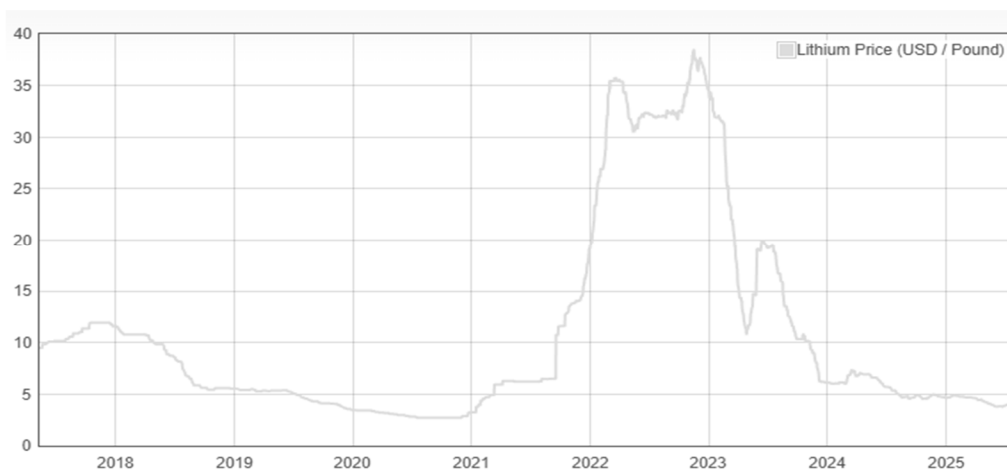
Cobalt and Lithium Prices

Cobalt Prices (US\$/pound):



Source: Dailymetalprice.com - <https://www.dailymetalprice.com/metalpricecharts.php?c=co&u=lb&d=0>

Lithium Prices (US\$/pound):



Source: Dailymetalprice.com - <https://www.dailymetalprice.com/metalpricecharts.php>