



NATIONAL MINING ASSOCIATION

WEEKLY STATISTICAL SUMMARY

April 10, 2026 Edition
(Data for Week Ending April 4, 2026)

Prepared by
National Mining Association

101 Constitution Avenue NW, Suite 500 East
Washington, DC 20001
(202) 463-2600
www.nma.org



NMA WEEKLY STATISTICAL SUMMARY

Vol. 63, No. 14 | Dated 4/10/26

COAL PRODUCTION, CONSUMPTION & TRADE

	Week Ended			* Cumulative Jan 1 to		
	04/04/26	04/05/25	% Chg	04/05/26	04/04/25	% Chg
EIA Coal Production (000 Tons):						
Week Ended/Year to Date	9,765	10,134	-3.6%	138,763	138,316	0.3%
52 Weeks Ended	532,188	514,886	3.4%			
AAR Coal Rail Cars Loaded:	56,069	58,314	-3.8%	784,279	765,647	2.4%
EIA Coal Production Month Ended - February						
EIA Coal Production	Feb 26/25		% Chg	Jan - Feb 26/25		% Chg
Month Ended - February	41,461	39,707	4.4%	87,307	84,552	3.3%

U.S. Department of Commerce Coal Trade (000 Tons)

	Feb 26/25		% Chg	Jan - Feb 26/25		% Chg
Coal Exports:						
Metallurgical	4,031	3,998	0.8%	8,256	7,763	6.4%
Steam Bit. *	2,450	3,385	-27.6%	6,005	7,289	-17.6%
Lignite	3	18	-83.3%	7	28	-75.0%
Anthracite	<u>12</u>	<u>3</u>	300.0%	<u>85</u>	<u>60</u>	41.7%
Total	6,496	7,404	-12.3%	14,353	15,140	-5.2%
Coal Imports:	254	197	28.9%	646	442	46.2%

	Week Ended			Cumulative Week 1 to		
	04/04/26	04/05/25	% Chg	04/05/26	04/05/25	% Chg
EEI Electric Total Output (Mil. Kwh)	76,196	74,475	2.3%	1,156,868	1,135,038	1.9%
AISI Raw Steel Output (000 Tons)	1,831	1,692	8.2%	24,028	22,835	5.2%

EIA AVERAGE COAL & NATURAL GAS SPOT PRICES

Dollars Per Short Ton

Average Coal Spot Prices (\$/Short Ton)	Week Ending			Natural Gas Spot Prices (\$/MMBtu)	
	04/03/26	03/27/26	% Chg	Wed.	01/21/26
Central App, 12,500 Btu, 1.2 SO ₂	\$87.00	\$87.00	0.0%	Henry Hub	4.98
Northern App, 13,000 Btu, < 3.0 SO ₂	\$70.75	\$70.75	0.0%	New York	5.52
Illinois Basin, 11,800, 5.0 SO ₂	\$56.00	\$56.00	0.0%	Chicago	4.79
Powder River Basin, 8,800 Btu 0.8 SO ₂	\$15.00	\$15.00	0.0%	Cal.Comp.Avg.	2.84

Coal exports and Imports are "as reported" (not revised); *Steam bit. excludes lignite & anthracite. All data in this report are preliminary and subject to revision. r/ revised.

Sources: EIA; Edison Electric Institute; American Iron & Steel Institute; Association of American Railroads; Dept. of Commerce; S&P Global

EIA Estimated Weekly U.S. Coal Production Overview									
Coal-Producing Region & State (thousand short tons)	Week Ended			Year to Date			52 Weeks Ended		
	4/4/2026 (week 14)	3/28/2026 (week 13)	4/5/2025 (week 14)	4/4/2026	4/4/2025	% change	4/4/2026	4/5/2025	% change
Alabama	261	263	276	3,685	3,367	9.5	14,679	13,962	5.1
Alaska	20	20	19	288	292	-1.6	1,027	983	4.5
Colorado	199	207	226	2,835	3,152	-10.1	11,309	11,945	-5.3
Illinois	629	682	673	8,968	10,527	-14.8	33,751	34,706	-2.8
Indiana	328	341	359	4,717	5,179	-8.9	18,478	19,575	-5.6
Kentucky total	411	426	457	5,826	6,321	-7.8	22,671	23,706	-4.4
Eastern (KY)	154	161	175	2,213	2,459	-10.0	9,049	9,952	-9.1
Western (KY)	257	265	282	3,613	3,862	-6.4	13,622	13,755	-1.0
Louisiana	5	5	5	70	68	2.6	267	259	3.1
Maryland	19	19	18	285	331	-13.8	1,165	1,287	-9.5
Mississippi	46	48	50	631	612	3.2	2,480	2,351	5.5
Missouri	2	2	2	23	25	-9.4	113	133	-15.0
Montana	436	463	477	6,253	6,173	1.3	26,333	26,398	-0.2
New Mexico	90	88	110	1,257	1,245	1.0	5,887	6,557	-10.2
North Dakota	423	488	417	6,354	7,077	-10.2	24,731	25,500	-3.0
Ohio	31	33	33	451	457	-1.5	1,734	1,748	-0.8
Oklahoma	s	.
Pennsylvania total	797	840	847	11,176	10,299	8.5	43,744	40,535	7.9
Anthracite (PA)	57	58	62	802	769	4.3	3,096	3,011	2.8
Bituminous (PA)	739	783	785	10,375	9,530	8.9	40,648	37,524	8.3
Texas	256	265	234	3,728	3,576	4.3	14,087	13,037	8.1
Utah	197	204	159	2,818	2,262	24.6	10,169	7,795	30.5
Virginia	172	182	186	2,434	2,362	3.0	9,885	9,637	2.6
West Virginia total	1,563	1,594	1,618	22,014	22,353	-1.5	83,570	80,913	3.3
Northern (WV)	866	883	861	12,200	12,490	-2.3	44,598	42,245	5.6
Southern (WV)	697	712	757	9,814	9,864	-0.5	38,971	38,667	0.8
Wyoming	3,880	3,998	3,967	54,950	52,638	4.4	206,107	193,859	6.3
Appalachian total	2,997	3,092	3,154	42,257	41,628	1.5	163,826	158,033	3.7
Interior total	1,523	1,607	1,605	21,751	23,849	-8.8	82,799	83,817	-1.2
Western total	5,245	5,469	5,375	74,755	72,840	2.6	285,563	273,036	4.6
East of Mississippi River	4,258	4,427	4,518	60,187	61,808	-2.6	232,158	228,420	1.6
West of Mississippi River	5,507	5,741	5,616	78,576	76,508	2.7	300,030	286,466	4.7
Bituminous and lignite	9,708	10,110	10,072	137,962	137,548	0.3	529,092	511,875	3.4
Anthracite	57	58	62	802	769	4.3	3,096	3,011	2.8
U.S. total	9,765	10,168	10,134	138,763	138,316	0.3	532,188	514,886	3.4
Railroad cars loaded	56,069	57,636	58,314	784,279	765,647	2.4	3,049,687	2,946,302	3.5

Source: Energy Information Administration



Weekly Electric Output

Volume 94 No. 14

OUTPUT FOR WEEK ENDED - Apr 04, 2026

The net available amount of electric energy distributed by the Total Electric Utility Industry+ for the week ended Saturday, **Apr 04, 2026** was **76,196** gigawatthours (GWh), according to the Edison Electric Institute.

WEEKLY ELECTRIC OUTPUT BY GEOGRAPHIC DIVISION

(48 CONTIGUOUS STATES)

	Week Ended April 04		52 Weeks Ended April 04	
	GWh Output	% Increase Over Corresponding Week of 2025	GWh Output	% Increase Over Corresponding Week of 2025
New England	1,954	-1.07 %	115,339	0.85 %
Mid-Atlantic	6,787	-0.83 %	419,461	0.10 %
Central Industrial	11,794	3.11 %	682,283	3.16 %
West Central	6,080	-1.08 %	348,025	3.08 %
Southeast	18,461	-0.58 %	1,061,528	0.97 %
South Central	17,400	4.33 %	945,441	3.25 %
Rocky Mountain	5,365	6.46 %	308,586	0.45 %
Pacific Northwest	3,344	6.54 %	162,813	0.84 %
Pacific Southwest	5,012	7.87 %	279,747	1.66 %
Total United States	76,196	2.31 %	4,323,222	1.88 %

WEEKLY ELECTRIC OUTPUT IN PREVIOUS WEEKS--GWh

Week Ended	2026	Week Ended	2025	% Inc. (26/25)	52 Weeks Ended	2026	% Inc. (26/25)
Mar 14	75,247	Mar 15	72,295	4.08 %	Mar 14	4,311,970	1.72 %
Mar 21	77,717	Mar 22	72,289	7.51 %	Mar 21	4,317,398	1.84 %
Mar 28	76,162	Mar 29	72,059	5.69 %	Mar 28	4,321,501	1.91 %
Apr 04	76,196	Apr 05	74,475	2.31 %	Apr 04	4,323,222	1.88 %
Apr 04	1,156,868	Apr 05	1,135,038	1.92 %	YEAR TO DATE, FIRST 14 WEEKS		

AMERICAN IRON AND STEEL INSTITUTE
 25 Massachusetts Avenue, NW, Suite 800
 Washington, D.C. 20001

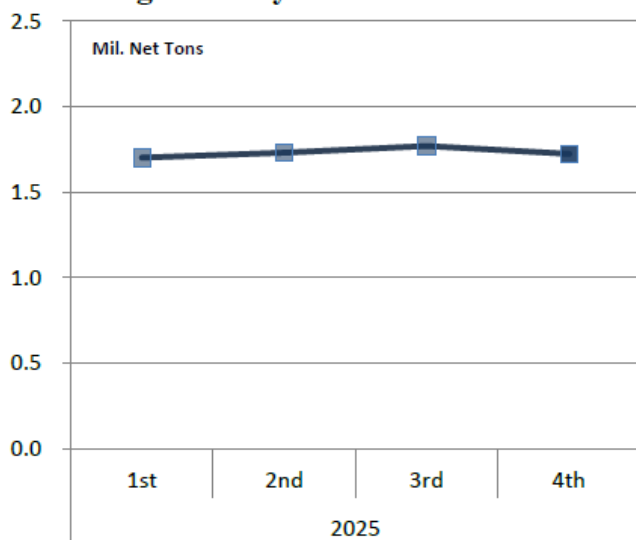
Apr. 6, 2026

ESTIMATED WEEKLY RAW STEEL* PRODUCTION

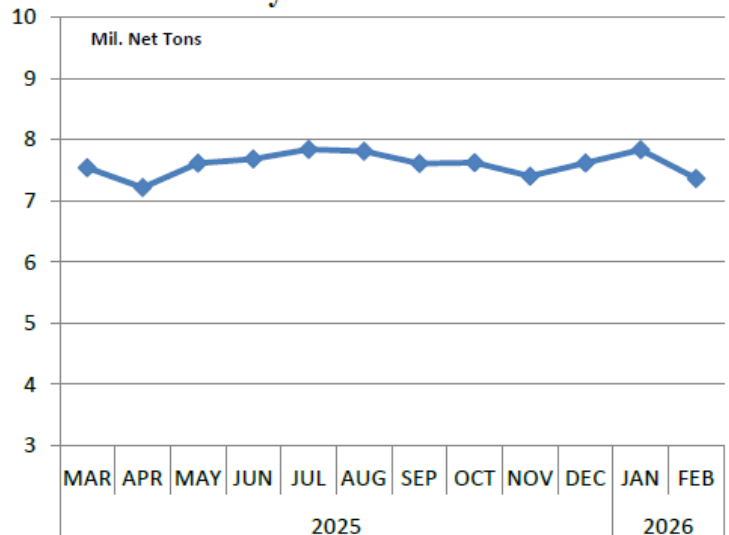
<u>Period</u>	<u>Thousand Net Tons</u>	<u>Percent Change from Previous Period</u>	<u>Percent Capability Utilization**</u>	<u>Production by District</u>		
				<u>Week Ending</u>		
				<u>Apr. 4</u>	<u>Mar. 28</u>	
<u>Week Ending</u>				North East	133	136
				Great Lakes	517	513
Apr. 4, 2026	1,831	1.6	79.1	Midwest	286	270
Apr. 4, 2025	1,692	8.2	75.6	Southern	826	818
Mar. 28, 2026	1,803	1.2	77.9	Western	69	66
				Total	1,831	1,803
<u>Year-to-Date +</u>						
Apr. 4, 2026	24,028	5.2	77.4			
Apr. 4, 2025	22,835	-	76.1			

*Raw steel production tonnage included in this report is estimated based on a sampling of steel producers (50% of domestic producers). Therefore, this report should be used primarily to assess production trends. The AISI production report "AIS 7," produced monthly and available by subscription, provides a more accurate summary of steel production based on data supplied by companies representing approximately 75% of U.S. production capacity plus includes revisions for previous months.

Average Weekly Raw Steel Production



Monthly Raw Steel Production



*Steel in the first solid state after melting suitable for further processing or sale, including ingots, steel for castings and strand or pressure cast blooms, slabs or other product forms. ** Based on tonnage capability to produce raw steel for a sustained full order book.

U.S. Rail Traffic¹
Week 13, 2026 – Ended April 4, 2026

	This Week		Year-To-Date		
	Cars	vs 2025	Cumulative	Avg/wk ²	vs 2025
Total Carloads	229,243	1.0%	2,913,351	224,104	3.9%
Chemicals	34,933	4.5%	446,377	34,337	3.8%
Coal	56,069	-4.2%	761,116	58,547	2.7%
Farm Products excl. Grain, and Food	17,694	7.6%	228,256	17,558	2.3%
Forest Products	8,474	1.9%	103,036	7,926	-4.4%
Grain	25,052	7.6%	319,914	24,609	16.9%
Metallic Ores and Metals	19,743	-5.4%	244,401	18,800	2.0%
Motor Vehicles and Parts	16,127	-2.1%	196,351	15,104	0.1%
Nonmetallic Minerals	31,102	-2.1%	357,390	27,492	2.6%
Petroleum and Petroleum Products	10,734	13.3%	141,773	10,906	7.7%
Other	9,315	9.7%	114,737	8,826	1.9%
Total Intermodal Units	272,085	-0.6%	3,583,488	275,653	-0.2%
Total Traffic	501,328	0.1%	6,496,839	499,757	1.6%

¹ Excludes U.S. operations of CPKC, CN and GMXT.

² Average per week figures may not sum to totals as a result of independent rounding.

Source: AAR website - <https://www.aar.org/Pages/NEWS-and-EVENTS.aspx>

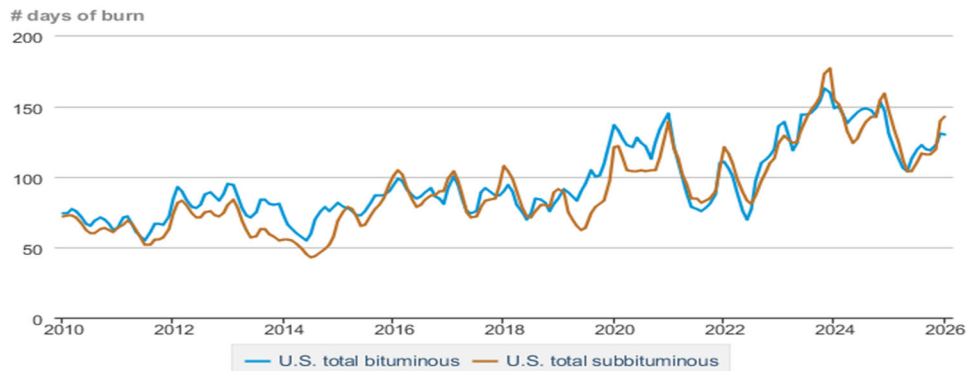
Average weekly coal commodity spot prices
dollars per short ton

	Week ending					Week ago change
	03/06/26	03/13/26	03/20/26	03/27/26	04/03/26	
Central Appalachia 12,500 Btu, 1.2 SO ₂	\$83.00	\$87.50	\$87.00	\$87.00	\$87.00	\$0.00
Northern Appalachia 13,000 Btu, < 3.0 SO ₂	\$65.50	\$70.50	\$70.75	\$70.75	\$70.75	\$0.00
Illinois Basin 11,800 Btu, 5.0 SO ₂	\$54.50	\$56.00	\$56.00	\$56.00	\$56.00	\$0.00
Powder River Basin 8,800 Btu, 0.8 SO ₂	\$15.00	\$15.00	\$15.00	\$15.00	\$15.00	\$0.00

Data source: With permission, S&P Global

Source: Energy Information Administration (with permission from S&P Global), *Coal Market Report*

Days of burn by non-lignite coal rank, January 2010 - January 2026

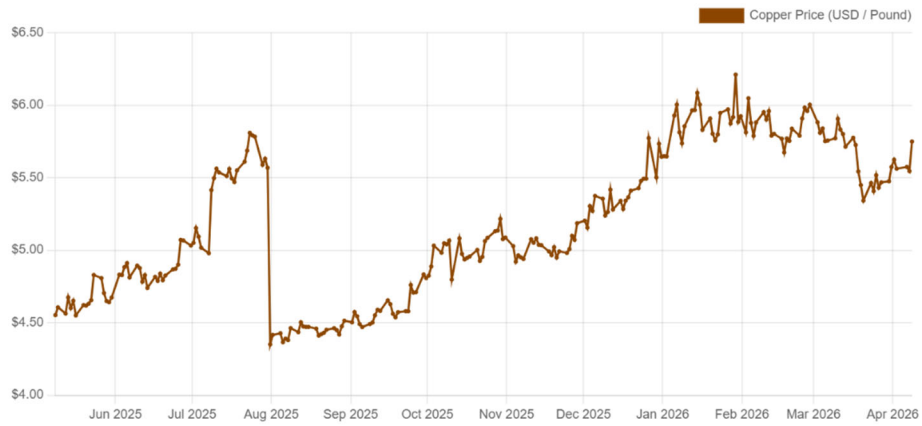


Data source: U.S. Energy Information Administration

Source: Energy Information Administration, *Electricity Monthly Update Report*

Copper, Gold and Silver Prices

Copper Prices (USD/LB):

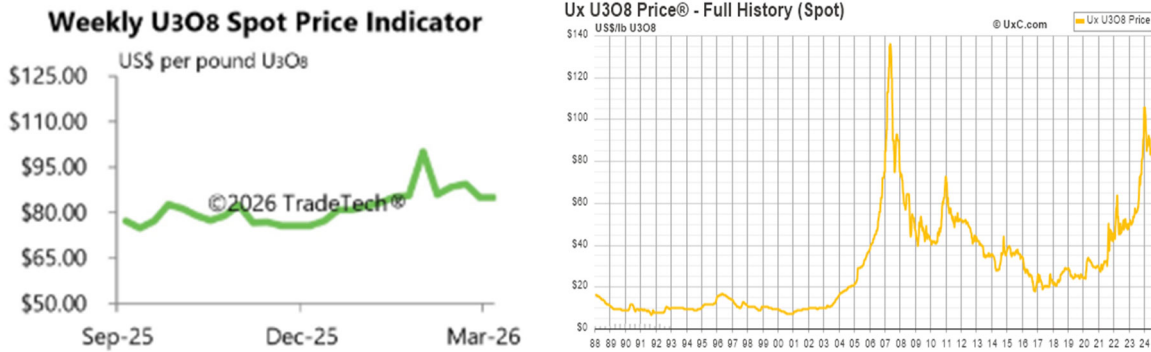


Gold and Silver Prices (USD/Troy OZ):



Source: Dailymetalprice.com - <https://www.dailymetalprice.com/metalprices.php>

Trade Tech’s and UX’s Uranium Price Indicators



Sources: Trade Tech, Uranium Info Website – www.uranium.info ; Source: Ux Consulting Co., LLC – <http://www.uxc.com>

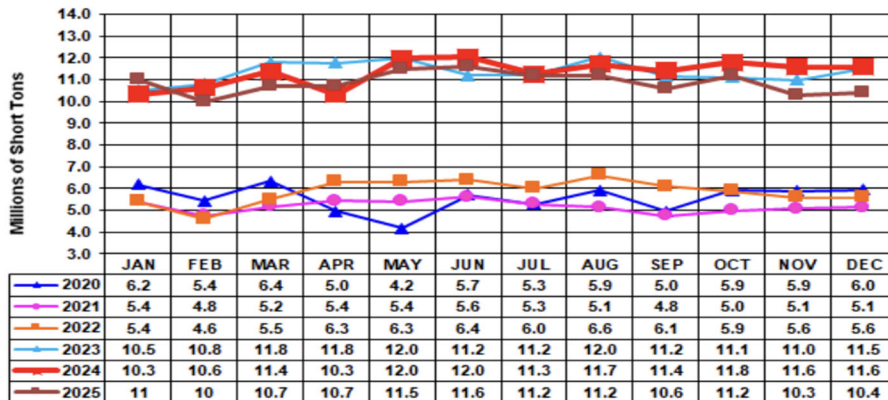
Coal stocks and average number of days of burn for non-lignite coal by region (electric power sector)

Zone	Coal	January 2026		January 2025		% Change of Stocks	December 2025		% Change of Stocks
		Stocks (1000 tons)	Days of Burn	Stocks (1000 tons)	Days of Burn		Stocks (1000 tons)	Days of Burn	
Northeast	Bituminous	1,491	182	1,087	107	37.1%	1,727	187	-13.7%
	Subbituminous	-	-	-	-	-	-	-	-
South	Bituminous	17,162	131	15,834	124	8.4%	19,497	139	-12.0%
	Subbituminous	5,224	99	5,275	94	-1.0%	5,495	92	-4.9%
Midwest	Bituminous	8,673	113	10,410	134	-16.7%	9,453	106	-8.3%
	Subbituminous	26,276	127	29,247	144	-10.2%	27,627	123	-4.9%
West	Bituminous	1,905	166	2,720	207	-30.0%	1,927	151	-1.2%
	Subbituminous	29,589	176	29,431	164	0.5%	28,641	170	3.3%
U.S. Total	Bituminous	29,231	130	30,052	131	-2.7%	32,604	131	-10.3%
	Subbituminous	61,089	143	63,953	147	-4.5%	61,763	140	-1.1%

Source: U.S. Energy Information Administration

Source: Energy Information Administration, Electric Monthly Update

Coal and Coke Monthly Indicator for Internal U.S. Waterways



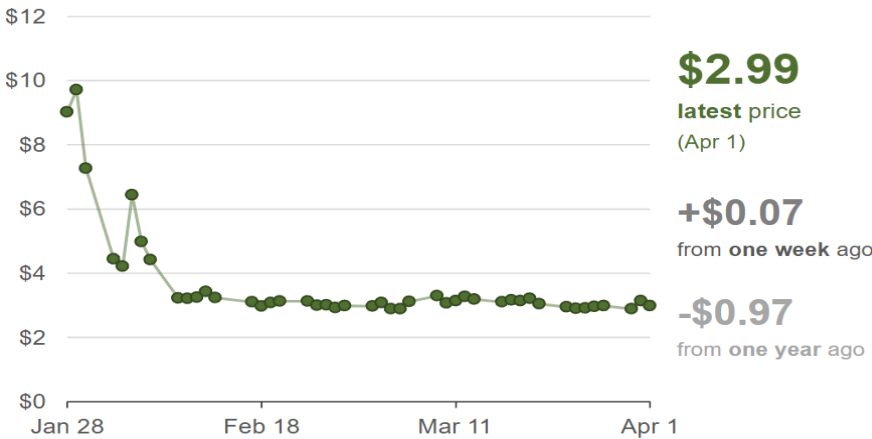
For the Internal U.S. Waterway Monthly Indicators, estimates for the most recent month are based on lock performance management data. The estimates will be superseded by actual data as it becomes available.

Source: Waterborne Commerce Statistics Center

Commodity Prices - Snapshot					
Metals Prices		Date	Price	Date	Price
Cobalt (\$/lb)		3/31/26	\$25.53	4/2/26	\$25.53
Copper (\$/lb)		3/31/26	\$5.57	4/7/26	\$5.55
Gold (\$/ounce)		3/31/26	\$4,553.95	4/7/26	\$4,675.22
Lead (\$/lb)		3/31/26	\$0.86	4/7/26	\$0.88
Lithium (\$/kg)		3/31/26	\$23.61	4/7/26	\$23.16
Molybdenum (\$/kg)		3/31/26	\$77.50	4/7/26	\$78.66
Nickel (\$/lb)		3/31/26	\$7.77	4/7/26	\$7.67
Silver (\$/ounce)		3/31/26	\$72.68	4/7/26	\$72.09
Steel HRC Price (\$/mt)		3/31/26	\$1,070.20	4/7/26	\$1,078.30
Steel Rebar (\$/mt)		3/31/26	\$452.53	4/7/26	\$449.85
Zinc (\$/lb)		3/31/26	\$1.47	4/7/26	\$1.50
Energy Prices		Date	Price	Date	Price
Australia Coking Coal Futures (\$/mt)		3/31/26	\$235.00	4/7/26	\$233.75
Central Appalachian Coal (\$/st)		3/27/26	\$87.00	4/3/26	\$87.00
Newcastle Coal Futures (\$/mt)		3/31/26	\$142.15	4/7/26	\$138.26
Rotterdam Coal Futures (\$/mt)		3/31/26	\$119.00	4/7/26	\$112.00
Henry Hub Natural Gas (\$/mmbtu)		1/21/25	\$4.98	1/21/25	\$4.98
Uranium (\$/lb)		3/31/26	\$84.15	4/6/26	\$85.15

Sources: publically available data from eia.gov, dailymetalprice.com, tradingeconomics.com, sgxgroup.com, investing.com

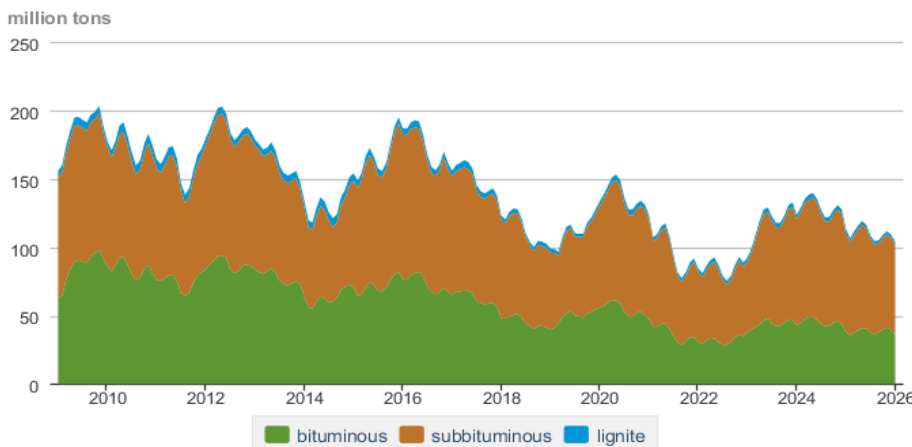
Henry Hub natural gas spot price dollars per million British thermal units (MMBtu)



Data source: Natural Gas Intelligence

Source: Energy Information Administration, *Weekly Natural Gas Storage Report*

Coal stocks by type, January 2009 - January 2026



Data source: U.S. Energy Information Administration

Source: Energy Information Administration, *Electricity Monthly Update*

USGS Cobalt – U.S. Trade, Reported Stocks and Listed Prices

Cobalt - December 2025	Dec-25	Year to Date
U.S. Imports for Consumption - Metals (mt)	772	11,300
U.S. Exports of Cobalt Materials - Cobalt Content (mt)	296	4,670
Reported LME Stocks of Cobalt Metal (mt)	123	-
Listed Prices by Type (\$/lb): US Spot & LME Cash Avg.	28.23	23.31

Source: USGS, Mineral Industry Survey, Cobalt in December 2025, March 2026

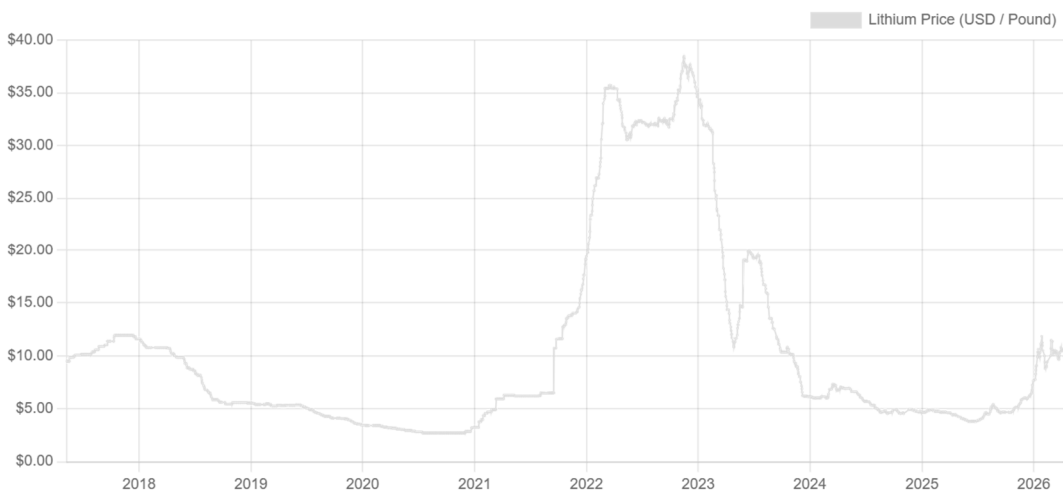
Cobalt and Lithium Prices

Cobalt Prices (US\$/pound):



Source: Dailymetalprice.com - <https://www.dailymetalprice.com/metalpricecharts.php?c=co&u=lb&d=0>

Lithium Prices (US\$/pound):



Source: Dailymetalprice.com - <https://www.dailymetalprice.com/metalpricecharts.php>